


DERVOSS

ULTIMATE INTERIOR SOLUTIONS [WOOD]

Le Collage

A landscape photograph capturing a serene scene at sunrise or sunset. The foreground is a vast, open field of dry, golden-brown grass, textured with subtle variations in color and light. In the middle ground, a dense line of trees stretches across the horizon, their forms softened by a thick layer of mist or low-lying clouds. To the right, a large, mature tree with dark, intricate branches and some autumn-colored leaves stands prominently, its trunk and lower branches partially visible. The sky is a pale, clear blue, transitioning into a warm, golden glow near the horizon where the sun is positioned, creating a soft, diffused light across the entire scene. The overall mood is peaceful and contemplative.

*"Wood is universally beautiful to a man. It is the
most humanly intimate of all materials."*
Frank Lloyd Wright




Table of Contents

Floating solid hardwood flooring

Pattern flooring

Wide plank flooring

Waterproof parquet

Wooden Walls

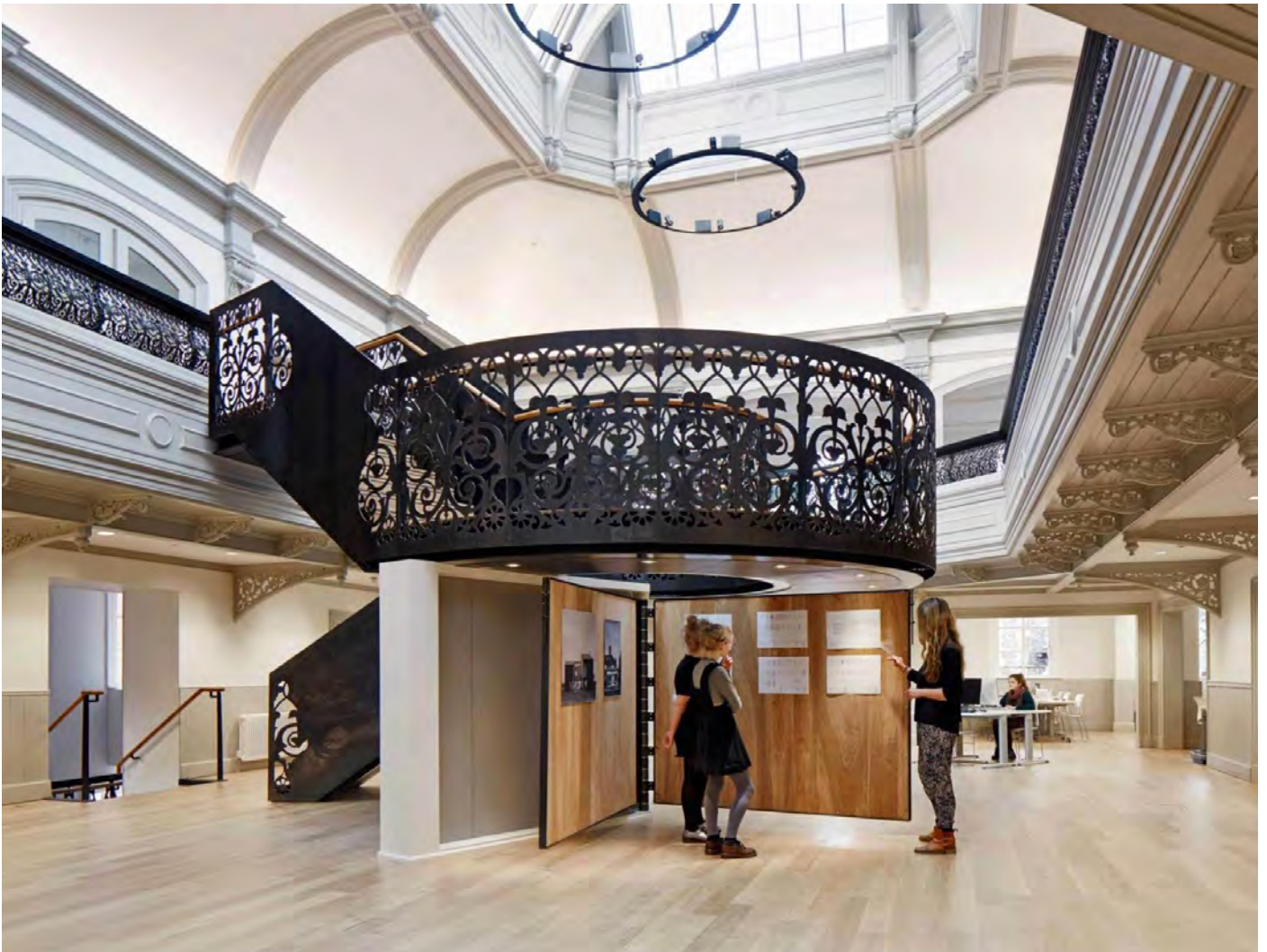
Exterior wood solutions

Stairs

FLOATING SOLID HARDWOOD FLOORING

Norwich University of Arts School of Architecture, **Norwich**

Wideboard Oak Nordic Classic





The Royal Opera House, London

Wideboard Oak Spicy Pepper Textured

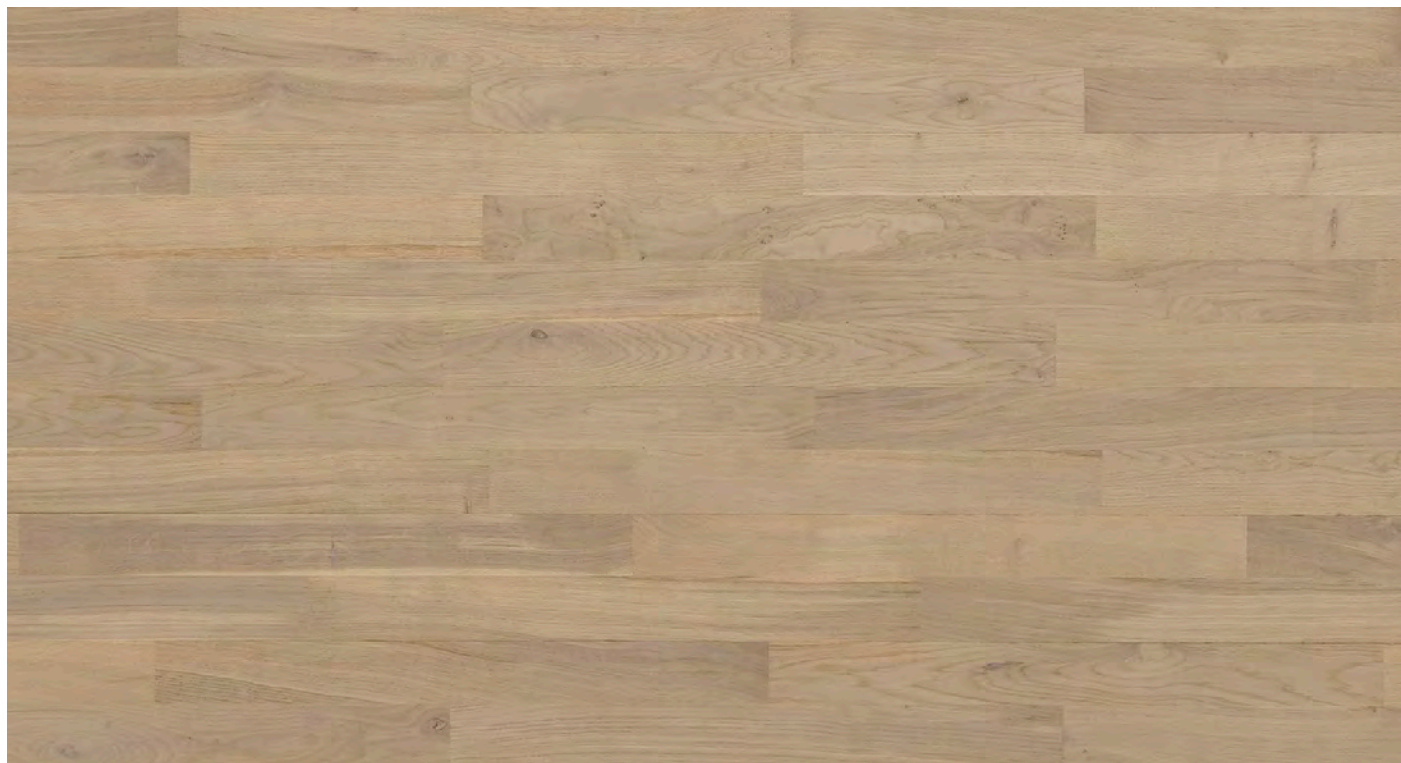
Floating installation is a unique method where the floor is affixed using special clips, remaining unattached to the subfloor. This exceptional approach proves to be a fantastic solution for grand projects.





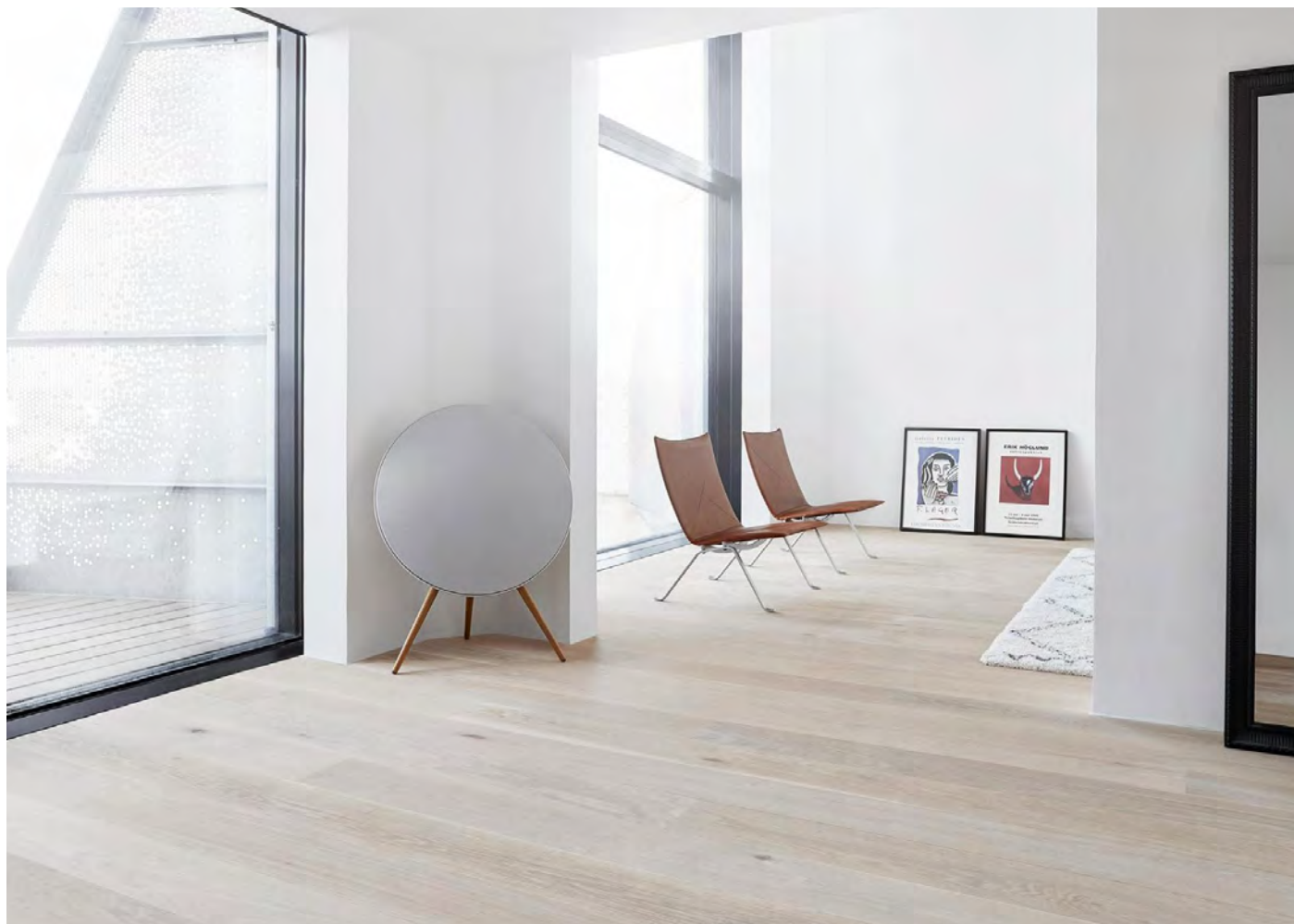
Fritz Hansen Showroom, Denmark
Wideboard Oak Boulevard Nordic Variation





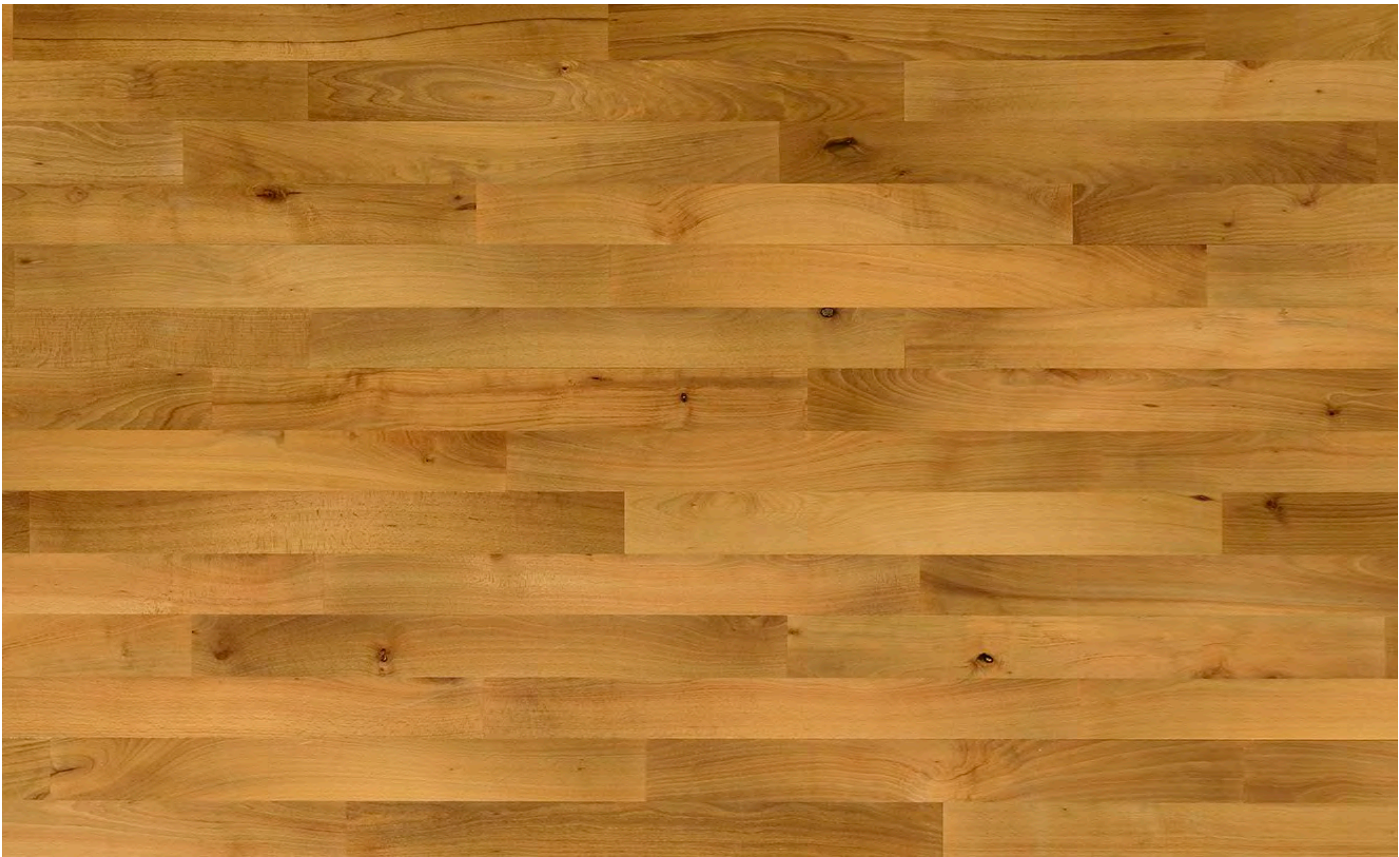
Kaust Investment Management Company, **Washington**
Wideboard Oak Golden Pearl Harmony



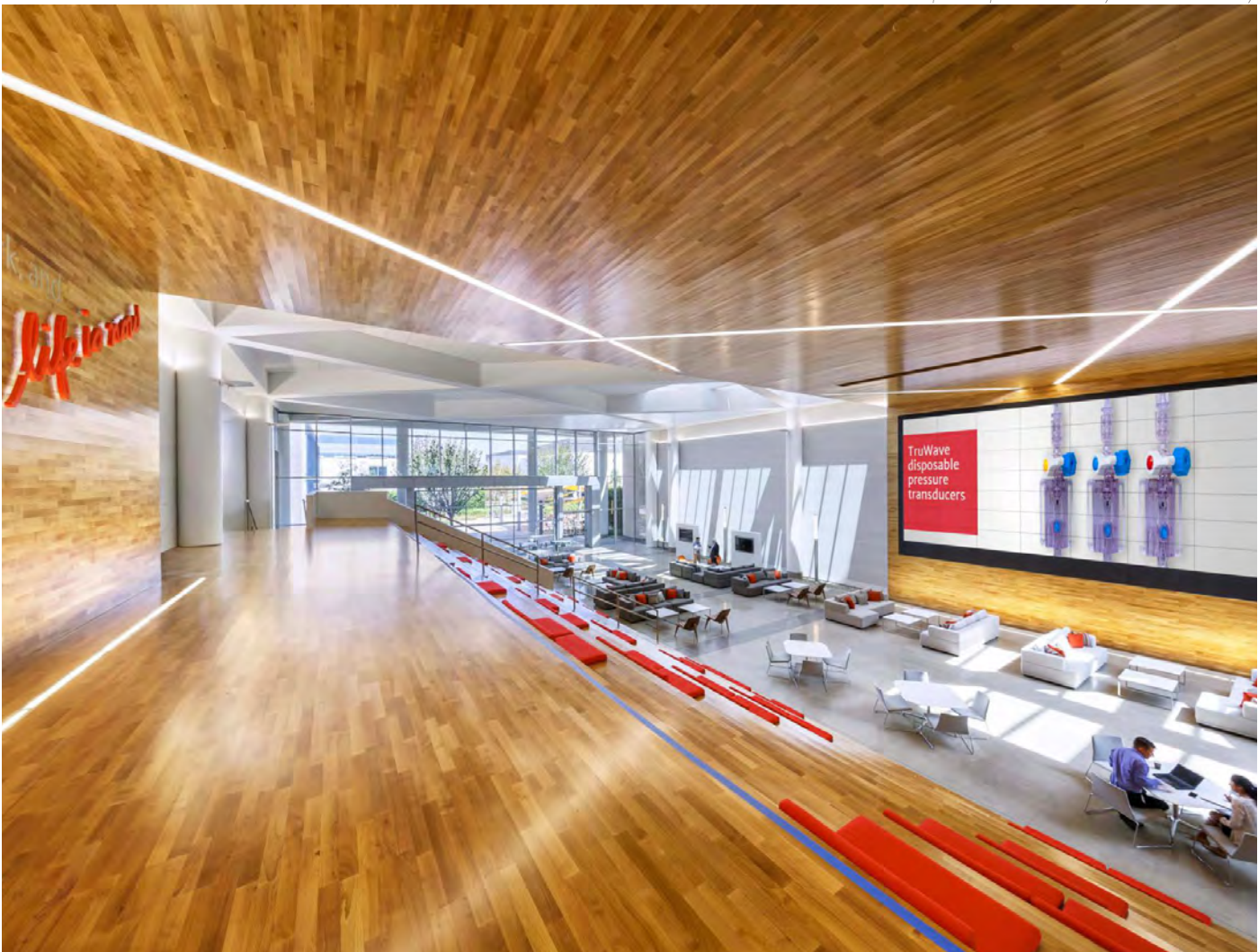


The Silo Apartments, Copenhagen
Wideboard Oak Boulevard Nordic White Plus Harmony





Medical Technology Company, California
2-strip Parquet Beech Sylvaket Harmony





Clip installation offers a fast, easy and clean method for installing solid hardwood flooring, contrasting with glue down parquet or ceramic tiles installation. It can be directly installed on various even subfloors like concrete, hd polystyrene, old wood floor, and even existing ceramic tiles, making it ideal for both new projects and renovations.





IDEAL Bar, Copenhagen
2-strip Parquet Black Oak Harmony





Wexford County Council, **Wexford**
Wideboard Oak Boulevard Harmony



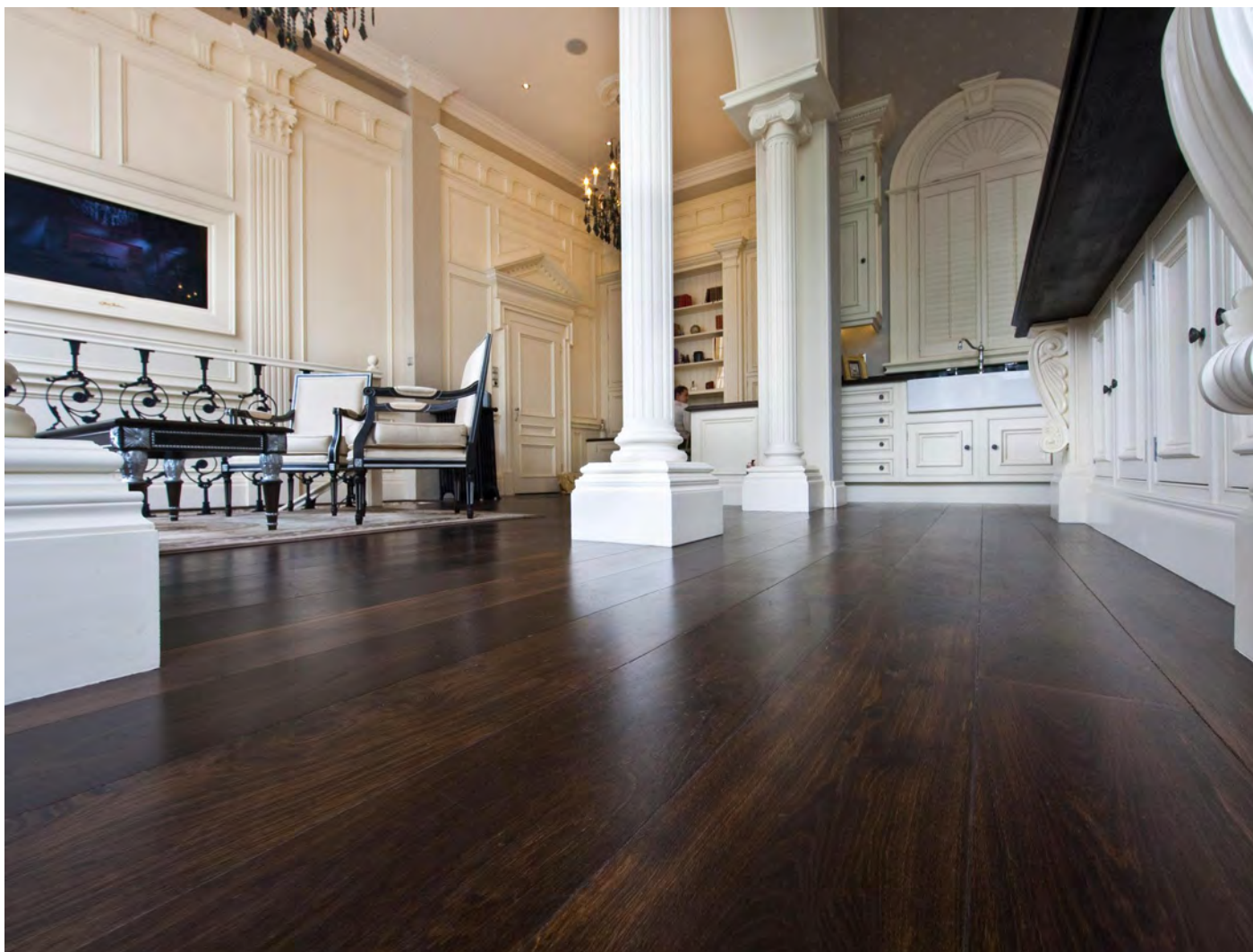


The Carnegie Library & Galleries, **Dunfermline**
Wideboard Oak Variation



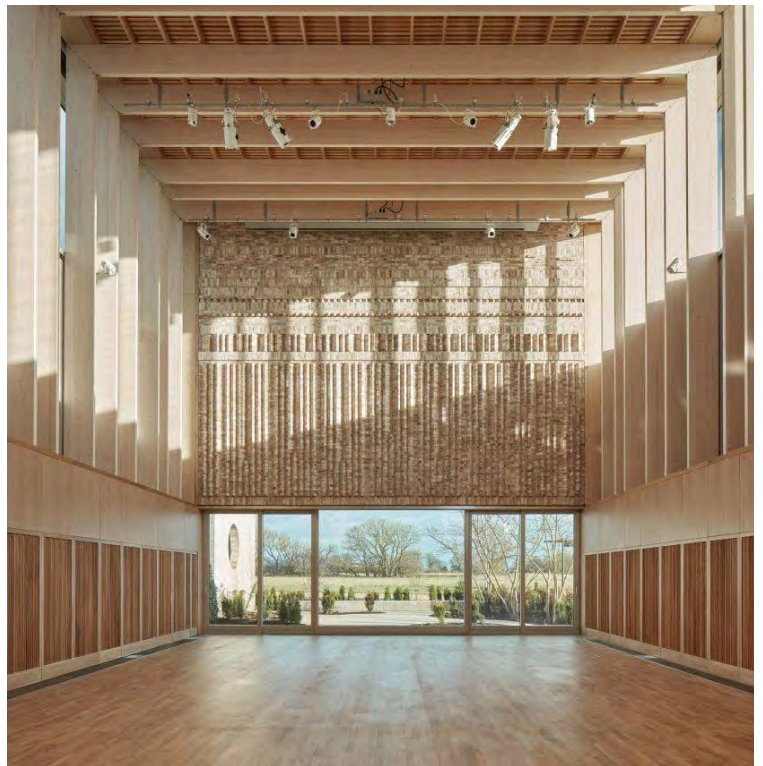


Clive Christian Showroom, Paris
Wideboard Black Oak Boulevard Harmony



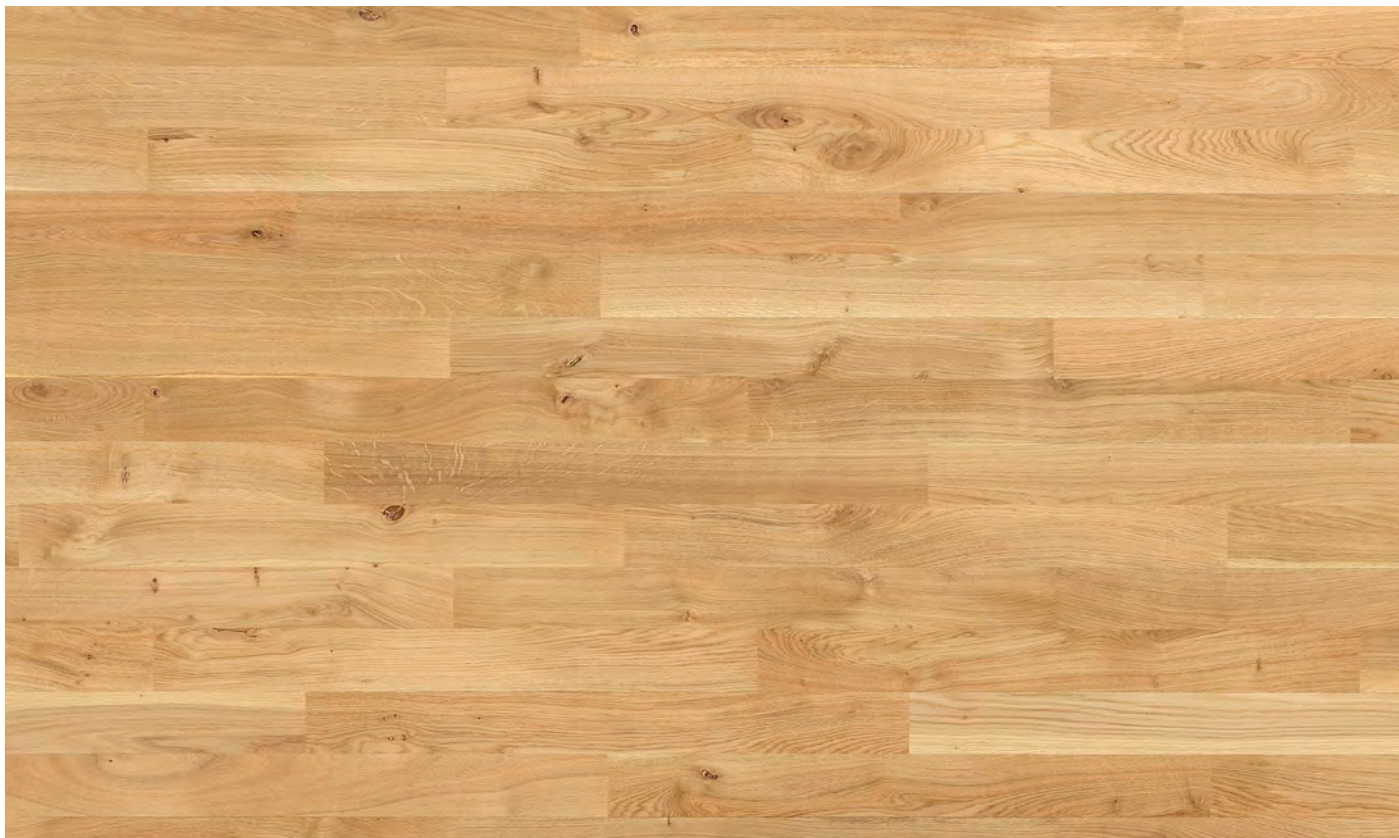
Classic (Select)

This grade has a uniform look with some colour and structural graining variation between the individual staves. Lighter tones of colour along the grain pattern and in the sapwood only to a limited extent. Few small knots and natural fine splits occur.



Storey's Field & Eddington Nursery, **United Kingdom**
2-strip Parquet Oak Classic





Musee Hyacinthe Rigaud, **Perpignan**
2-strip Parquet Oak Harmony



Harmony (Nature)

This grade has a natural look with more colour and structural graining variation between the individual staves. Lighter tones of colour are seen along the grain pattern and in the sapwood. Medium sized knots and natural fine splits occur to some degree. Knots and other irregularities are factory filled with a one colour filler.

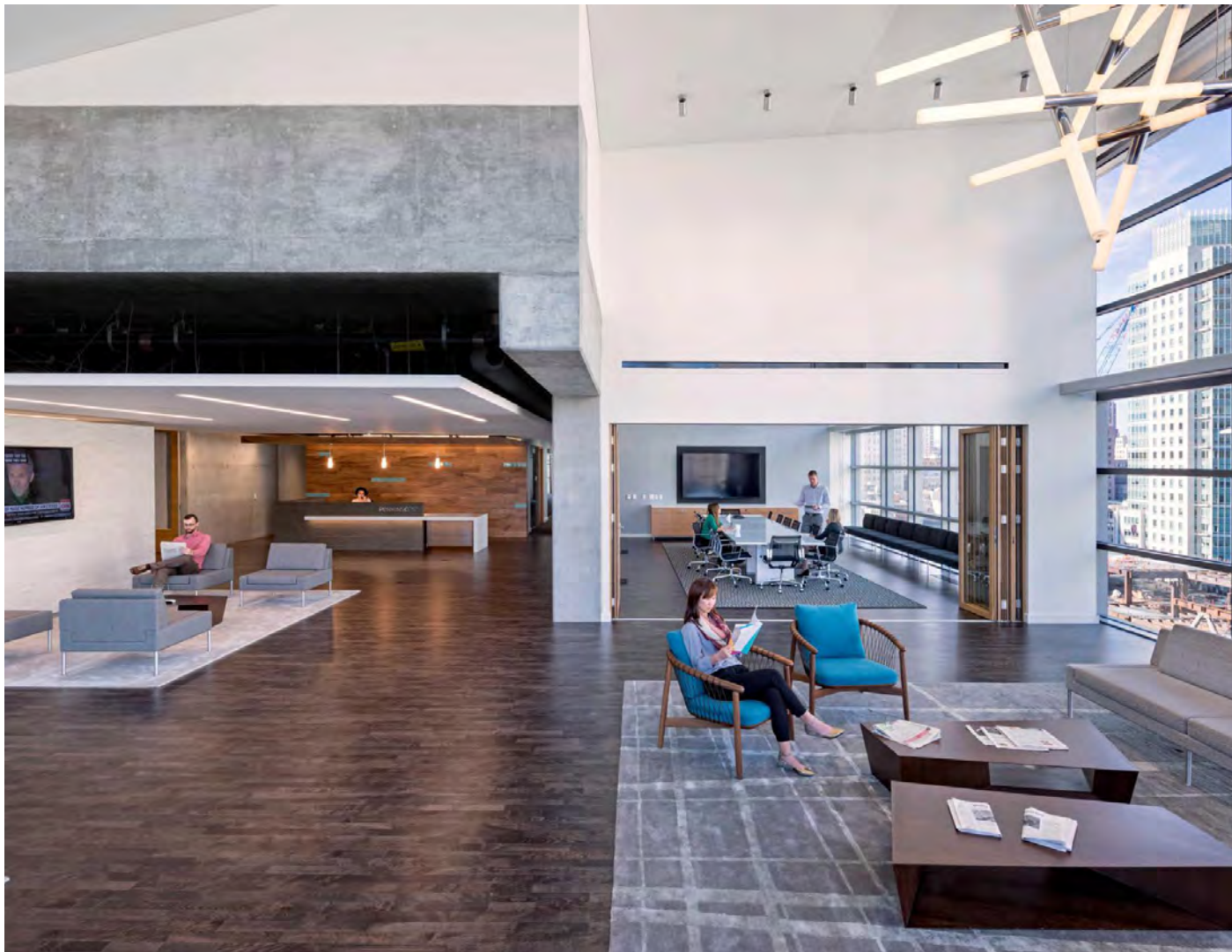


Garrison House, **Scotland**
2-strip Parquet Oak Variation

Variation (Rustic)

This grade has a rustic look with substantial colour and structural graining variation between the individual staves. Extensive areas with lighter tones of colour are seen along the grain pattern and in the sapwood. Several small and large knots and natural fine splits occur. Knots and other irregularities are to the greatest extent possible factory filled with a one colour filler.





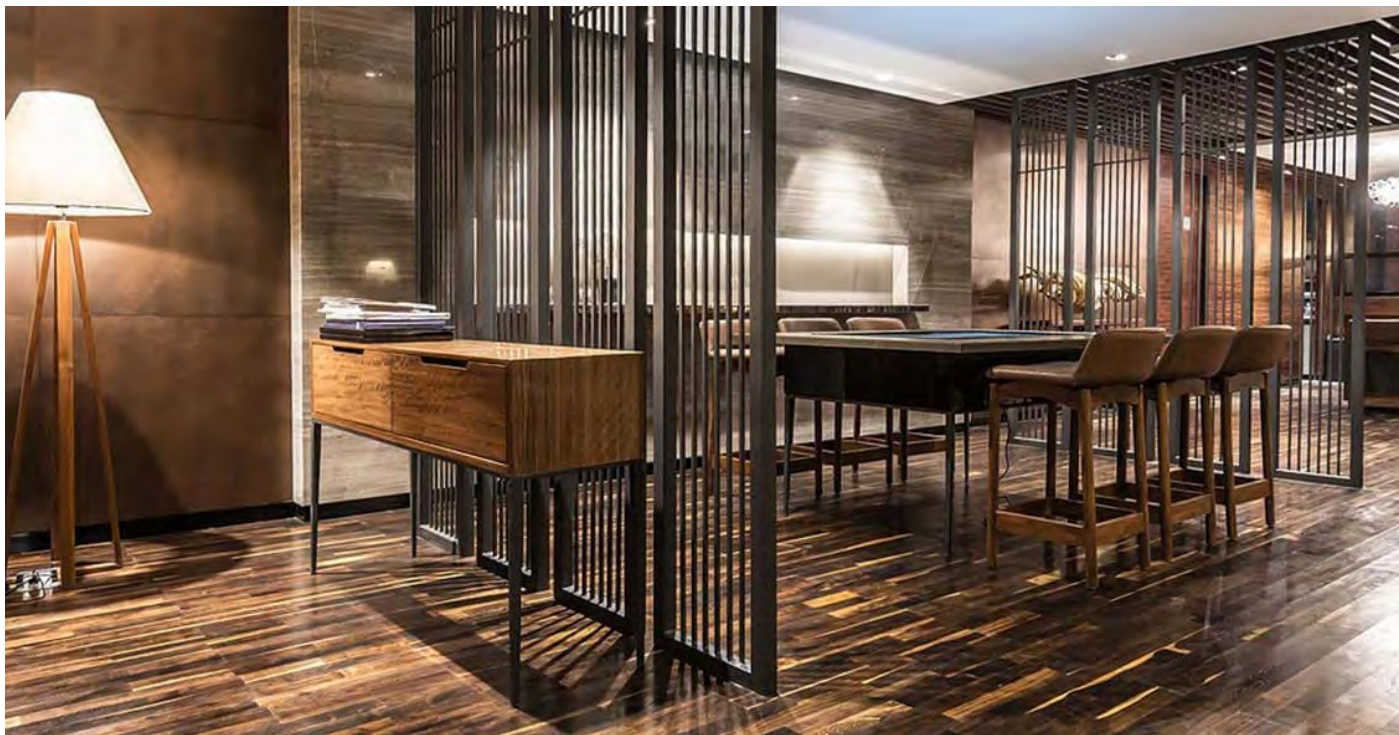
Perkins Coie Law Firm, San Francisco
2-strip Parquet Beech Spicy Pepper Harmony





DSV Headquarter, Denmark
Wideboard Oak Harmony





Supertech HQ VIP Lounge, Noida India
2-strip Parquet Black Oak Variation



Black Oak is from ancient times known as one of nature's own products made of oak stored submerged in a bog for centuries. Natural processes cause the oak almost to become black and this characteristic colour gives the wood a very authentic expression. Through a unique colouring technique has recreated this look and together with the excellent strength properties of the oak a very exclusive product for floors is achieved.

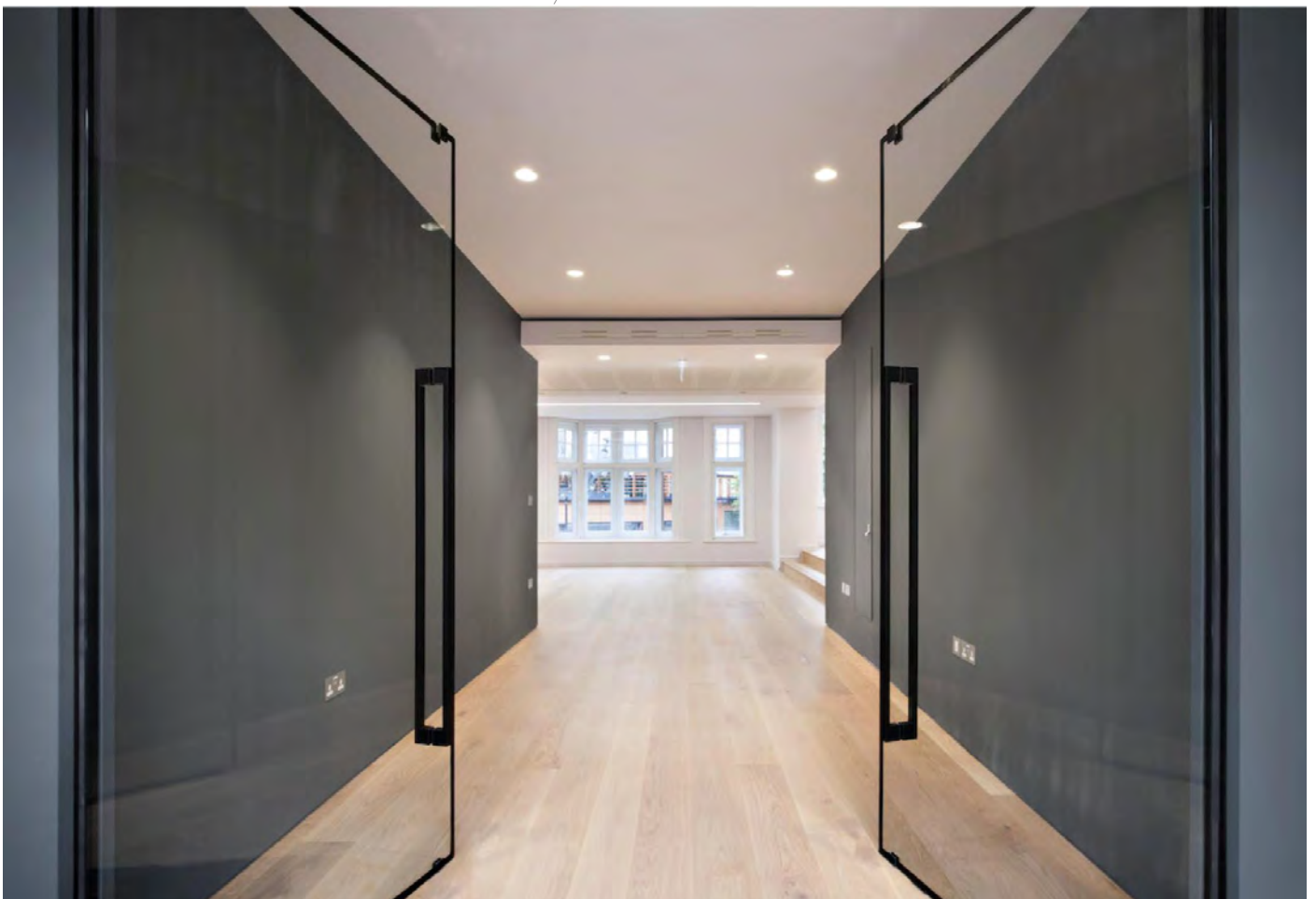


Nobu Hotel at Eden Roc, Miami Beach
Wideboard Oak Glacial White Harmony Textured





Knightsbridge, London
Wideboard Oak Nordic Harmony





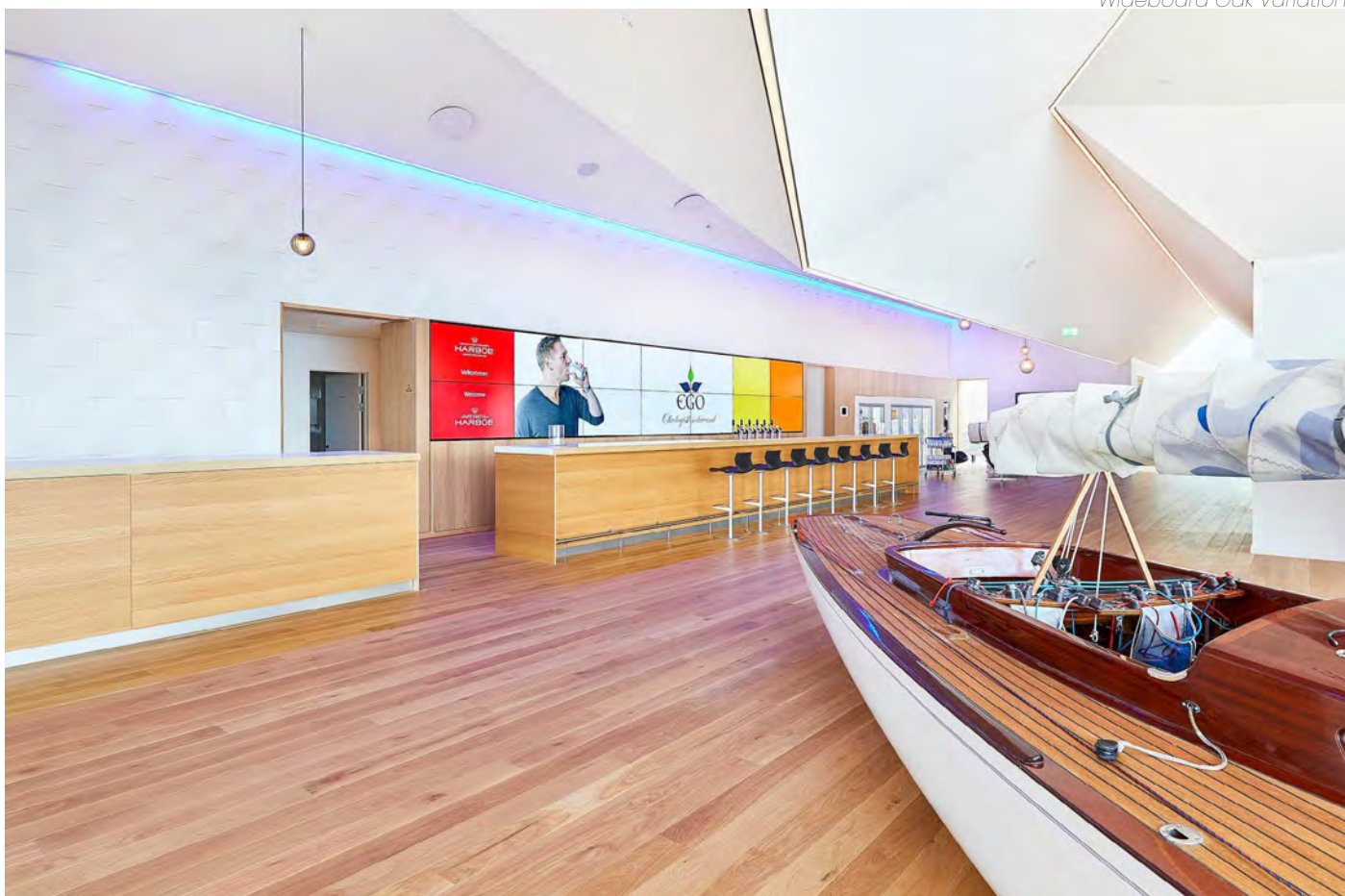
Pritzels fabrik, Lyngby

Wideboard Oak Driftwood Grey Harmony





Harboe Visitor Centre, **Skælskør**
Wideboard Oak Variation





Hotel Palacio de Tepa, Madrid
2-strip Parquet Black Oak Harmony





Imagine Montessori School, Valencia
2-strip Parquet Beech Variation





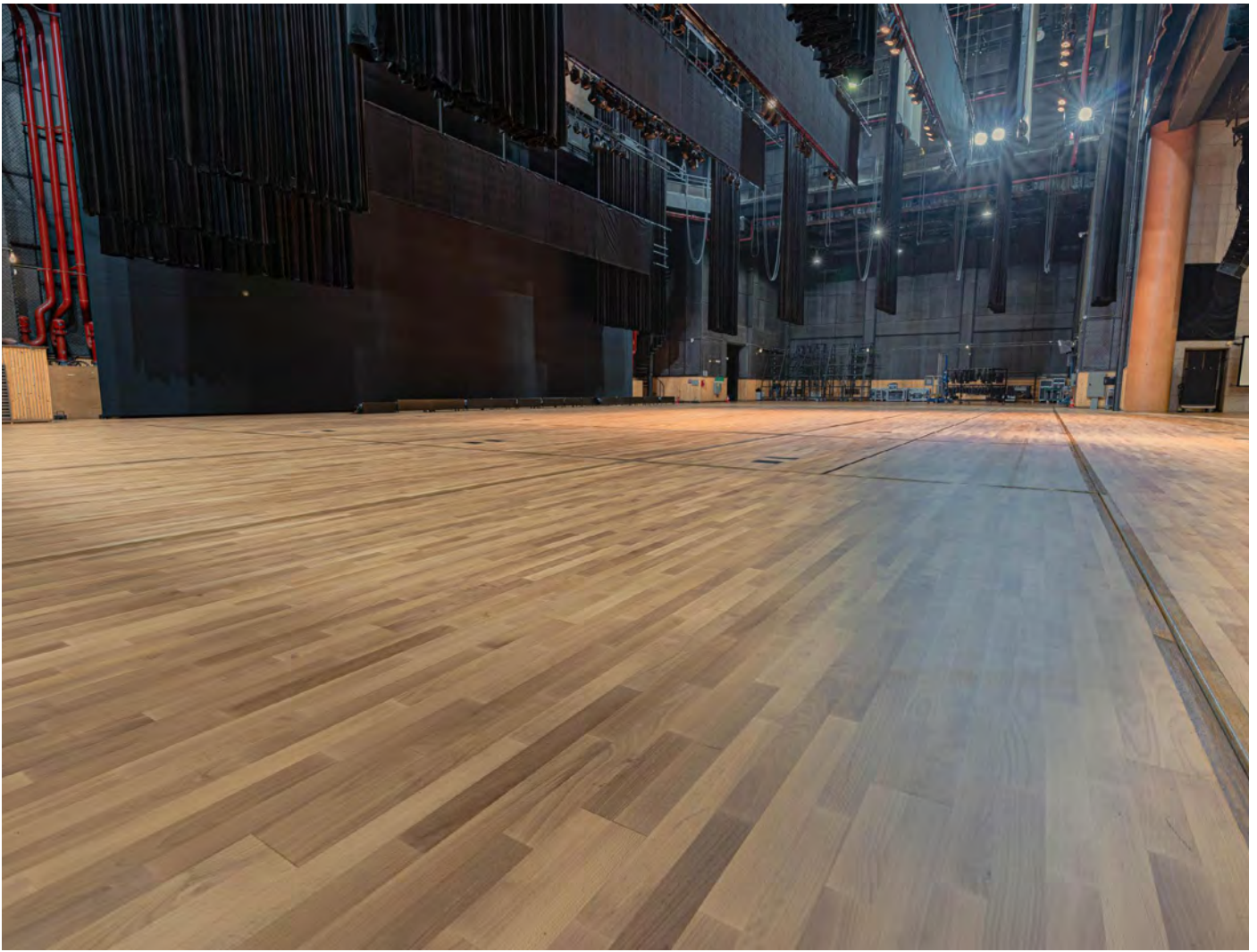
Hatfield Place, United Kingdom
Wideboard Oak Nordic Variation





Jaguar Land Rover HQ, Gaydon, Warwickshire
2-strip Parquet Oak Nordic Classic





Kunpo Cultural Center, South Korea
2-strip Parquet Beech Sylvakett Nordic Harmony





Spanish City, Whitley Bay
2-strip Parquet Black Oak Harmony



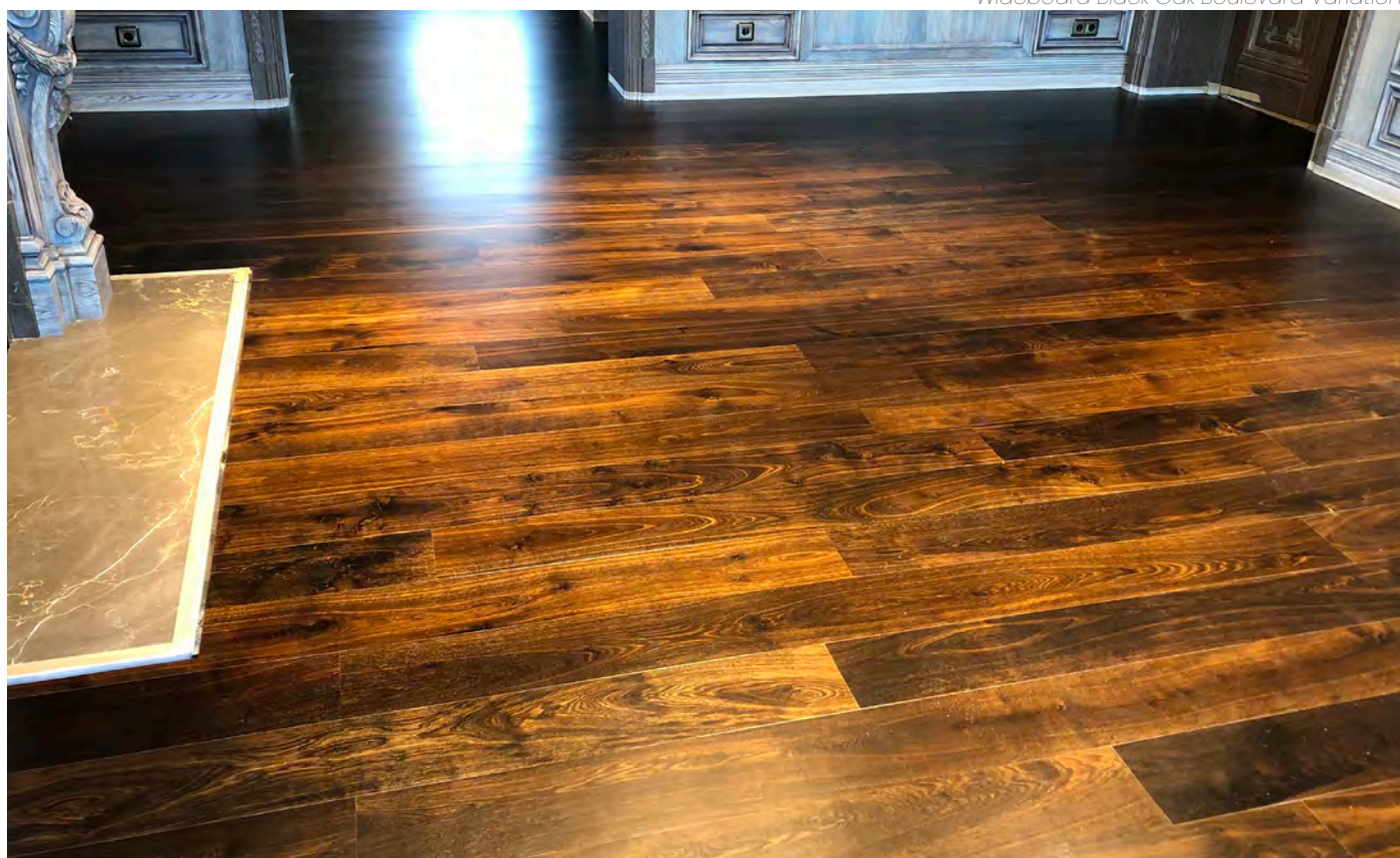


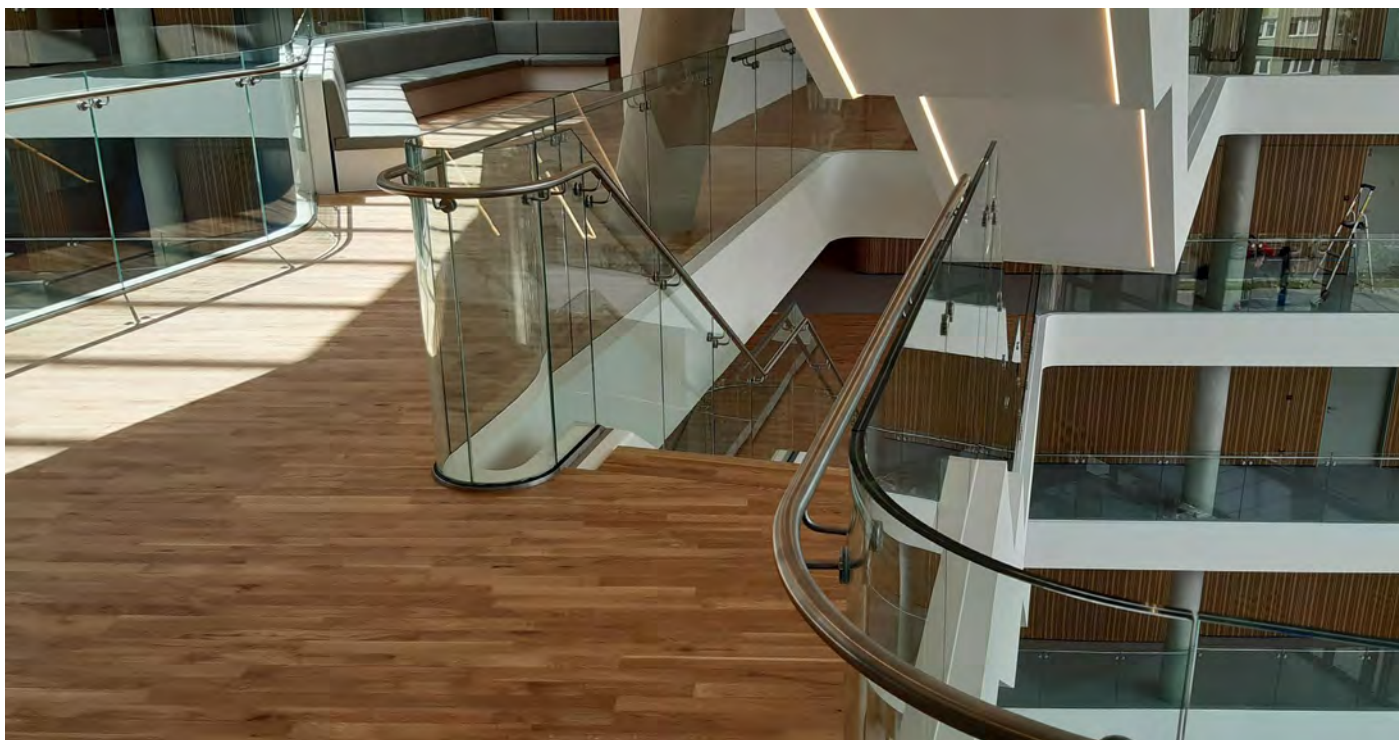
Velux HQ, **Glenrothes**
2-strip Parquet Beech Harmony





Private Villa, Moscow
Wideboard Black Oak Boulevard Variation





DSV Office Poland, Warszawa

2-strip Parquet Oak Variation





Solid Hardwood refers to lumber that is made entirely from a single piece of wood. It's like using a whole tree trunk for making furniture or other items without breaking it into smaller pieces. Imagine taking a slice from the trunk of a tree, and that slice is what you use to build things. It's strong and sturdy because it's one continuous piece of wood.

Wideboard Oak Boulevard Vista Grey Harmony





2-strip Parquet Ash Nordic Variation



2-strip Parquet Beech Raw Sugar Variation



Wideboard Oak Silver Pearl Harmony



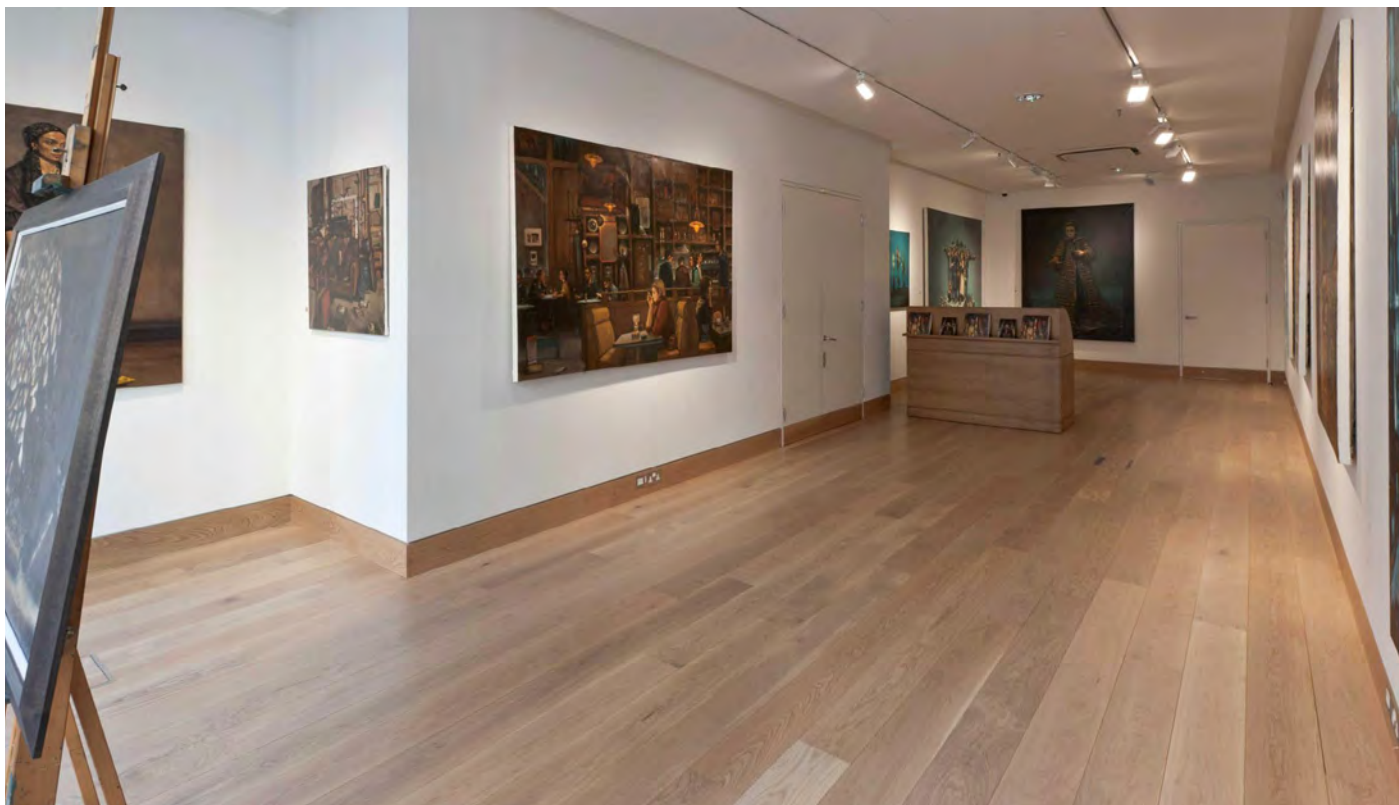
2-strip Parquet Maple Variation



2-strip Parquet Beech Nordic Classic



2-strip Parquet Black Oak Variation



Wideboard Oak Boulevard Nordic Harmony

2-strip Parquet Ash Nordic Harmony





2-strip Parquet Oak Nordic Harmony



Wideboard Oak Nordic Variation

PATTERN FLOORING

Scandic Landvetter Hotel, **Gothenburg**
Whale Bone Parquet Oak Harmony





Hotel Geysir, Iceland
Twin Herringbone Parquet Black Oak Harmony





London Design Fair, London
Hexparket Oak Harmony





Retro Villa, Denmark
Single Stave Parquet Square Pattern Oak Harmony





Atkis Gallery, Mayfair, London
Herringbone Parquet Oak Harmony





Sheraton Hotel – Club Lounge, **Bucharest**
Herringbone Parquet Black Oak Harmony





The Harley Gallery, Nottinghamshire

Single Stave Parquet Square Pattern Oak Harmony



Hilda Besse Building, Oxford
Custom Pattern Wideboard Black Oak Harmony





Laura Magee Showcase, **United Kingdom**
Twin Herringbone Parquet Oak Harmon





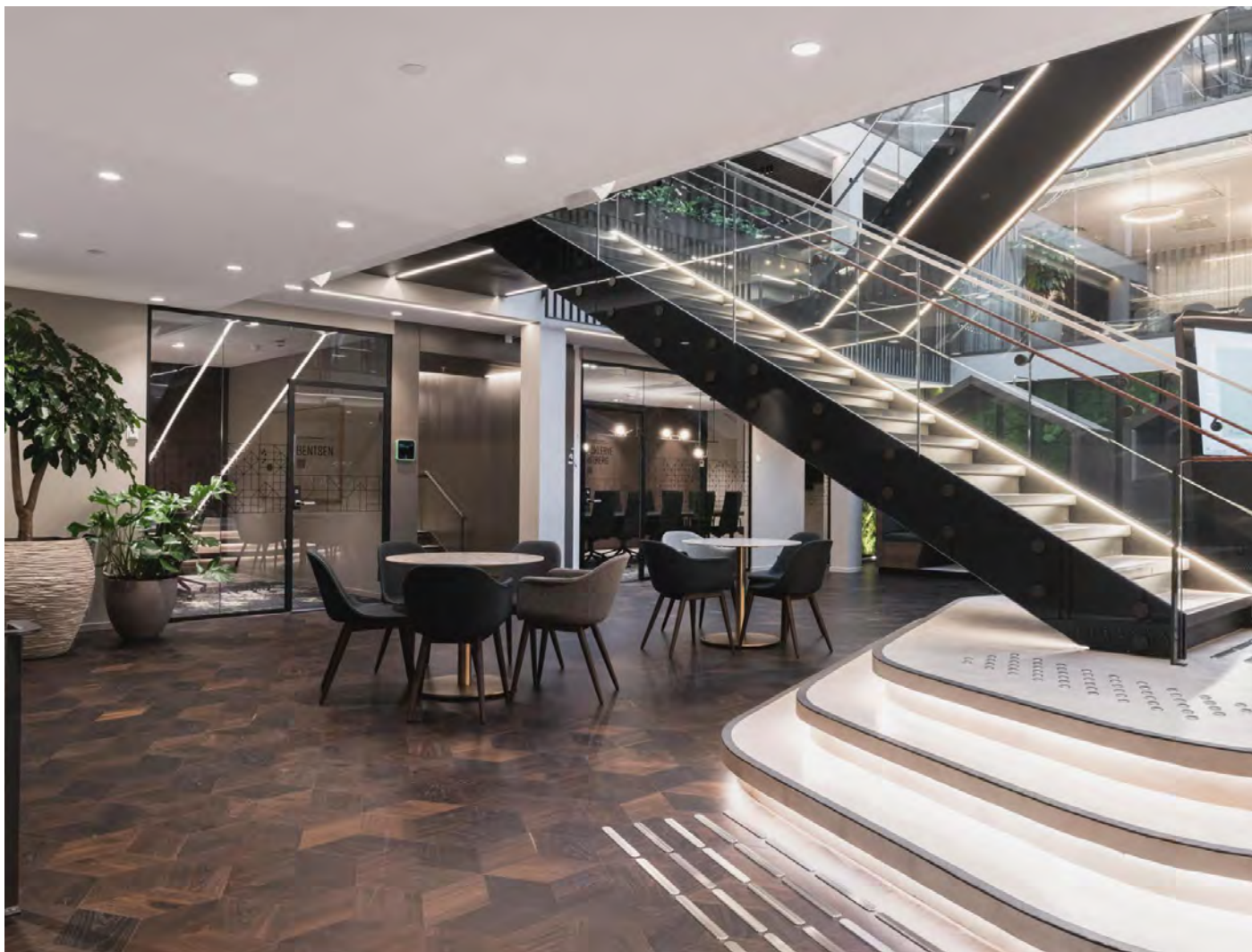
Freshfields Law Firm, San Francisco
Whale Bone Parquet Oak Vista Grey Harmony





National Gallery of Ireland, Dublin
Bespoke replication of Original Gallery Floor Oak





Legeforeningen, Oslo
Hexparket Black Oak Harmony





Private Residence, Turkey

Art Parquetry Oak Montevarchi Rustic



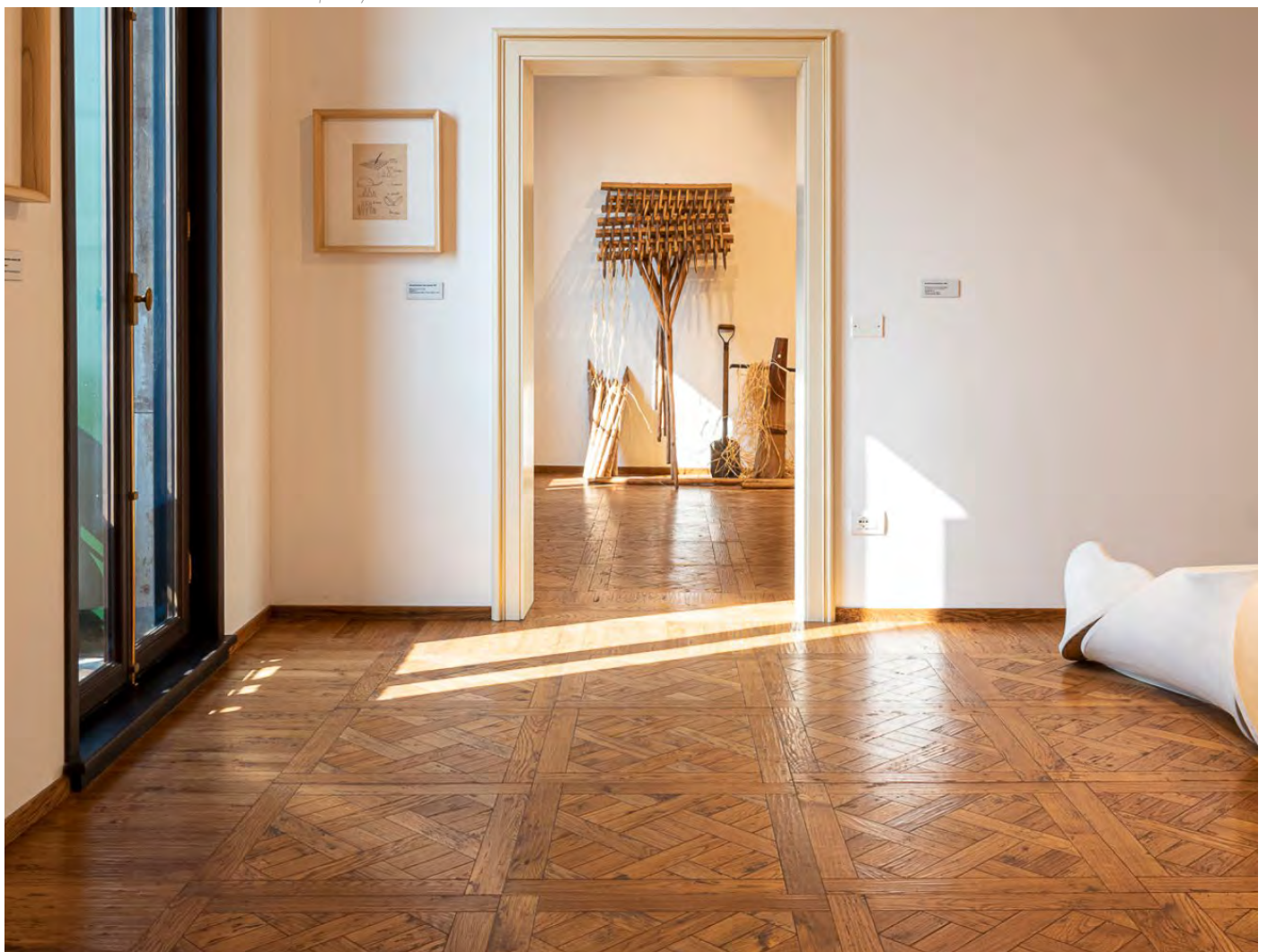


Private Residence, Italy
Chevron European Walnut Natur





Palazzo Cavanis, **Venice**
Art Parquetry Oak Versailles Rustic Hand Planed





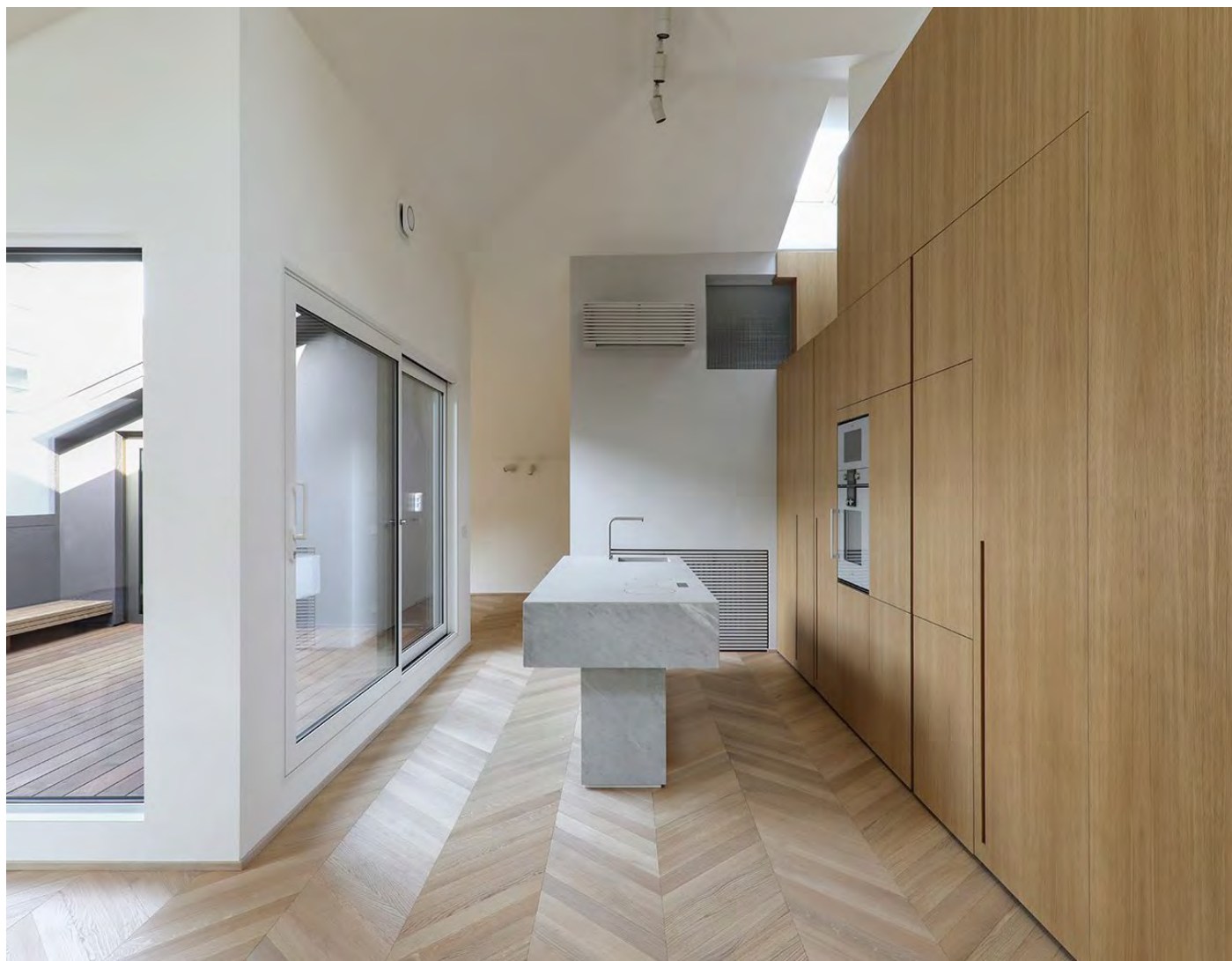
Carl Hansen Showroom, London
Whale Bone Oak White Washed Natur





Private Residence, Ankara
Art Parquetry Oak Capalbio Select





Appartamento PM, **Busto Arsizio**
Chevron Oak Bianco Select





Private Residence, Ankara

Art Parquetry American Walnut Montalcino Select





Private Residence, Istanbul
Chevron Oak Rustic Hand Planed





Casa D'Abbicco, Bari
Herringbone American Walnut Natur





Villa Crispi, Italy
Chevron Oak Select





Private Residence, **Moscow**
Herringbone Burma Teak Natur





Private Residence, Saint-Petersburg
Art Parquetry Custom Oak Select



WIDE PLANK FLOORING

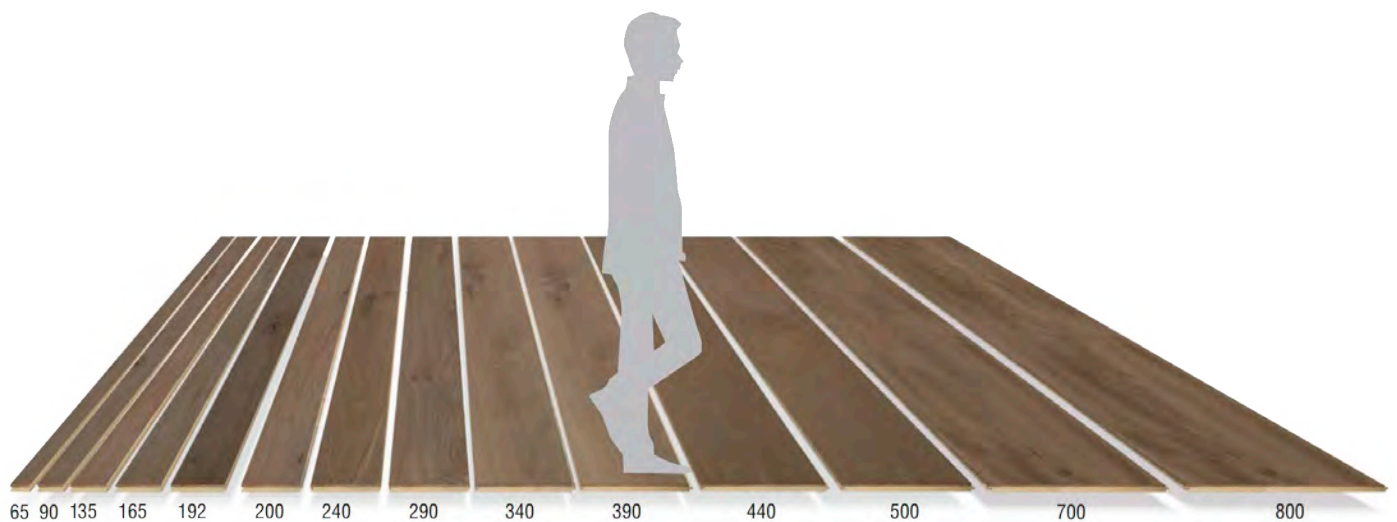
H-UNICA Atelier, Italy

Wide Plank European Walnut Onda 500 Rustic





Villa Marina, **Cannes**
Wide Plank Oak White Oil 800mm Rustic





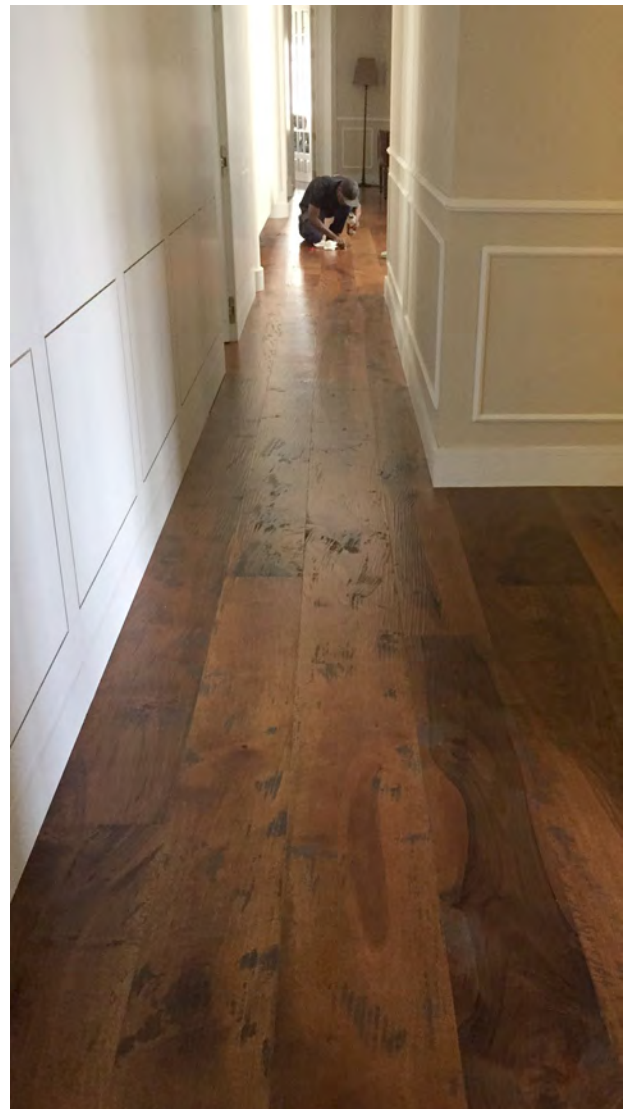
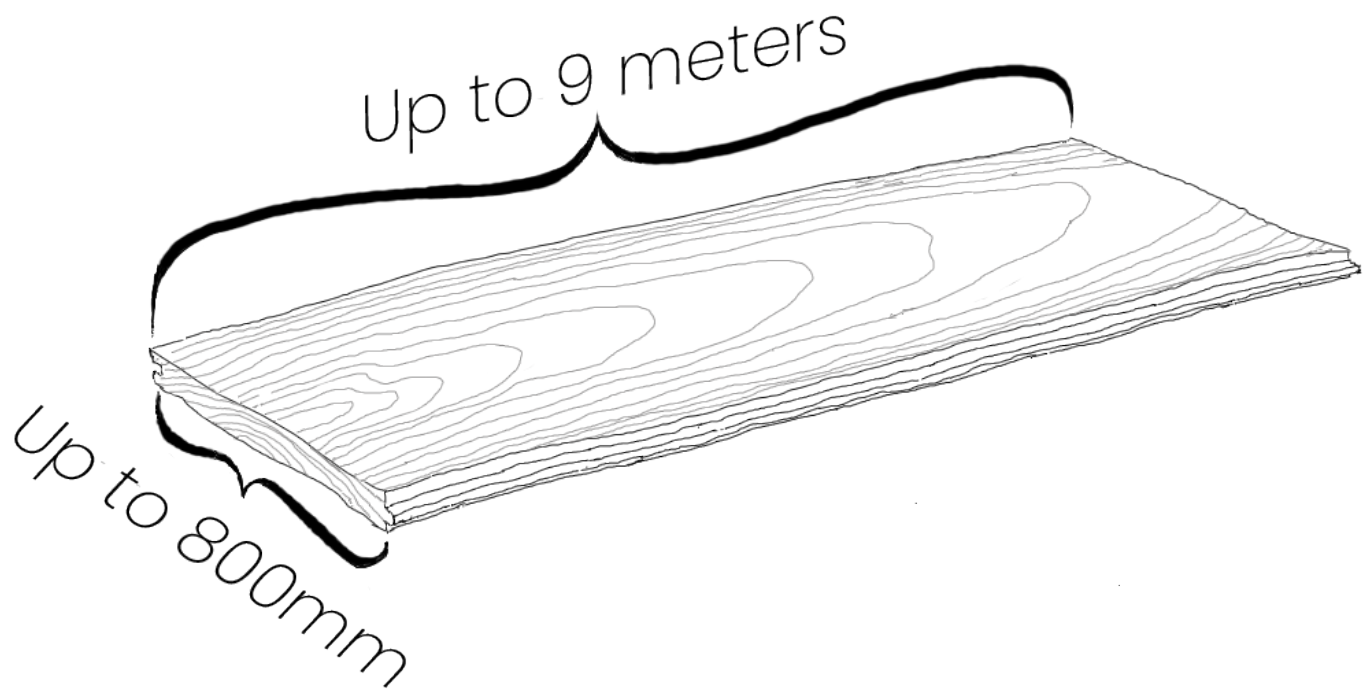
Custom Trapezium Planks Oak White Oil Hand Planed Rustic





Wide Plank Showroom, **Moscow**
Wide Plank American Walnut Random Width Rustic









Private Residence, Salzburg
Wide Plank Oak Oil Random Width Rustic





Private Office, Lend
Wide Plank Oak Eben Oil Hand Planed Rustic





Saatchi Gallery, London

Wide Plank Douglas Fir Whitewashed Select





Private Residence, **Santiago**
Wide Plank Oak Varnished Antic Select





Au Charmant Petit Lac Eco-Hotel Spa & Park, Champoluc
Wide Plank Austrian Larch Rustic





Private residence, Italy
Wide Plank Oak Brushed Custom Stain Rustic



WATERPROOF PARQUET

Waterproof Parquet Thermo Ash Rippled





Parquet for Wet Areas with Rubber Strip Elm





Waterproof Parquet Thermo Ash Rippled

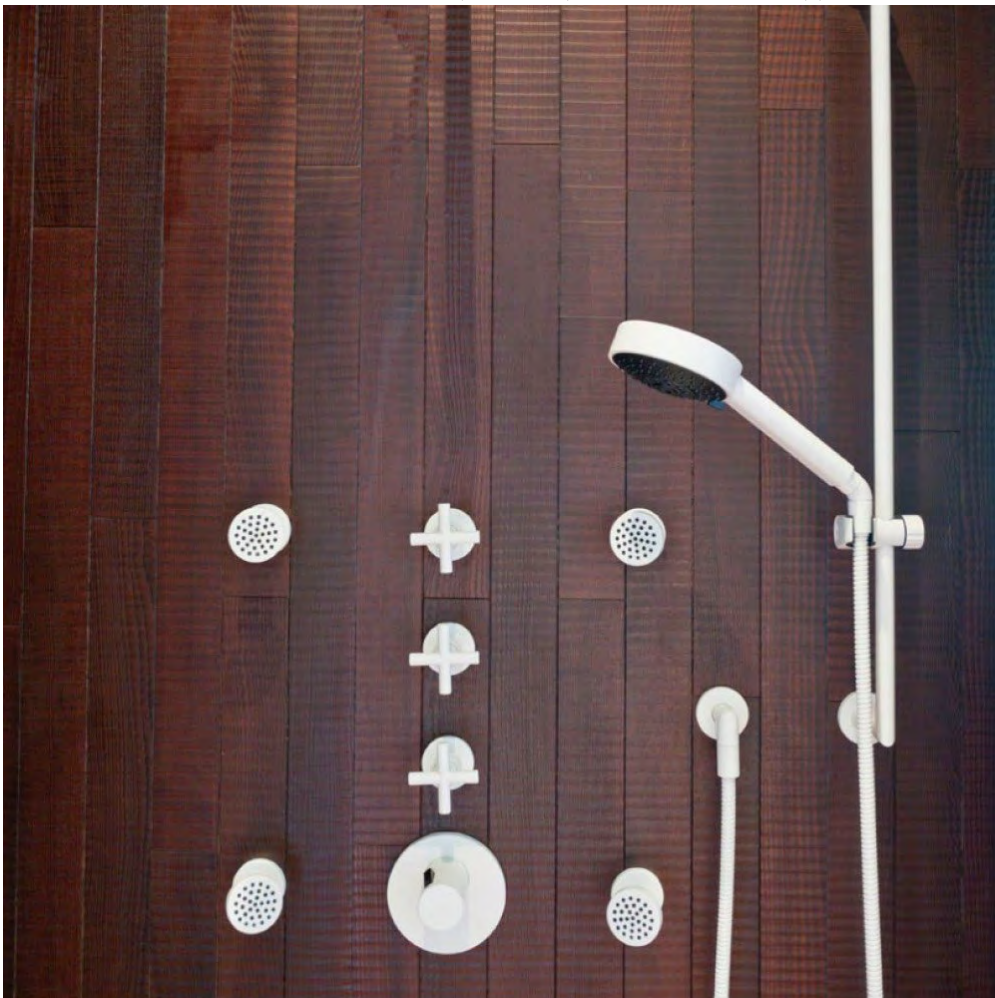
Parquet for Wet Areas with Rubber Strip Thermo Ash





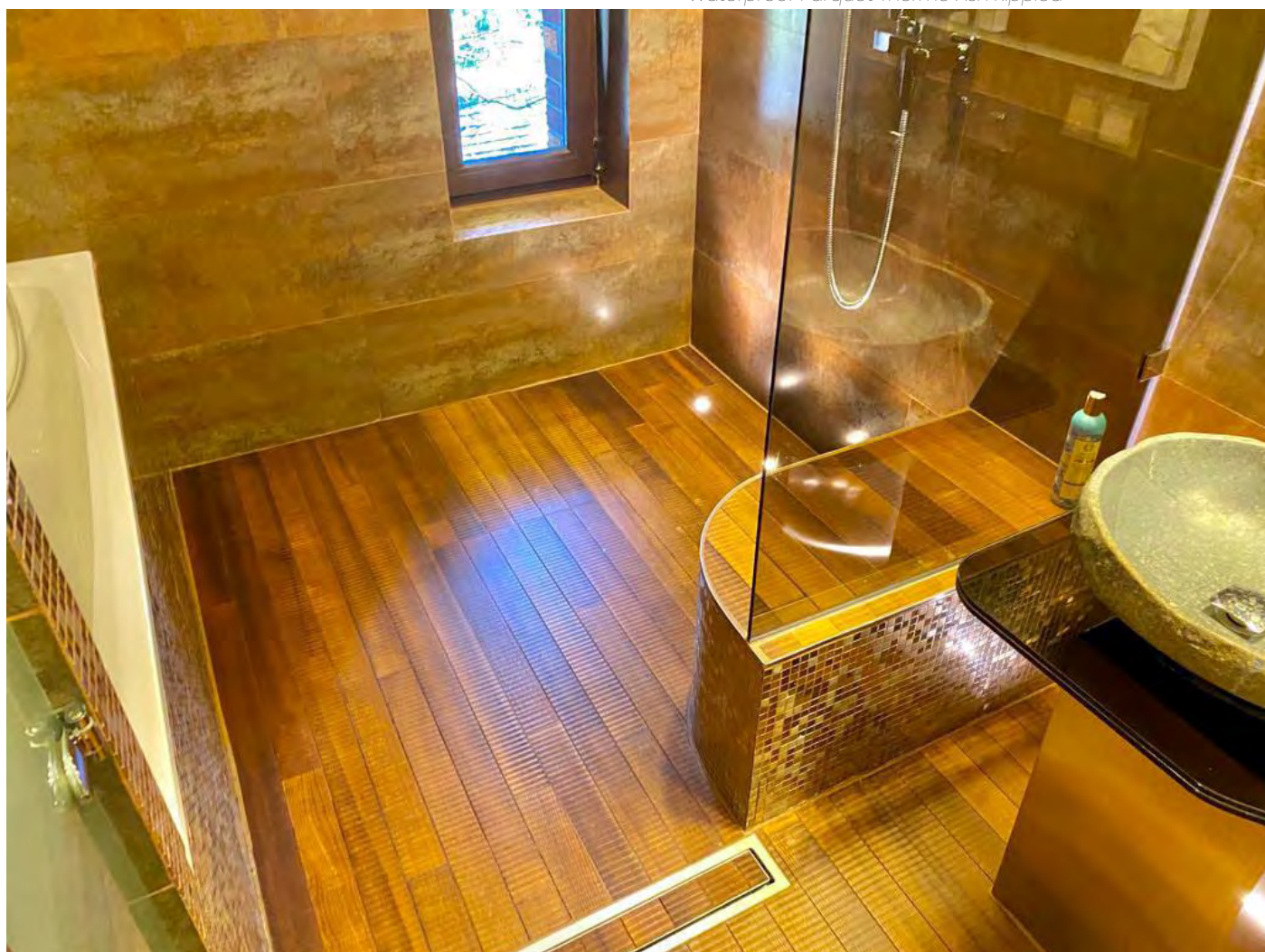
Private Residence, **Moscow**

Waterproof Parquet Dark Thermo Ash Rippled





Private Residence, **Moscow**
Waterproof Parquet Thermo Ash Rippled



Private Residence, **Moscow**

Waterproof Parquet Thermo Ash Rippled





Waterproof Parquet Thermo Ash Rippled



The one and only real wood flooring which is capable to stand direct water impact instead of regular ceramic tiles.

This innovative wood flooring product, born from Austria's rich history of wooden architecture in early 2000s, has quickly become a popular choice among homeowners worldwide for its unique and unparalleled properties. Unlike traditional hardwood flooring, this eco-friendly flooring option is designed to withstand direct water impact, making it perfect for use in bathrooms, around the pool, spa area and even in shower.

The product comes in panels made of single wood staves joined together. Each panel measures 7x500x900-3000mm, making it not only easy to install but also highly resistant to water damage. The thickness of these panels is similar to that of ceramic tiles, which allows customers to easily switch from ceramic tiles to wood panels at any stage of fit-out.

Another unique feature of this product is its special non-slip surface with a relaxing massage effect. This makes it not only practical and functional but also a luxurious and comfortable addition to any home.

What sets this product apart is its sustainable construction. Each panel is crafted using natural wax and thermo-treated ash, which gives it unmatched durability and resistance to water damage without compromising on the beauty of natural wood. This eco-friendly manufacturing process also ensures that the product is as environmentally friendly as it is functional.

Austria remains the leading hub for this type of flooring, and for good reason. As a nation that values sustainable design and natural materials, Austria continues to lead the way in developing innovative wood-based products that are both beautiful and durable. If you are looking to renovate your home or build a new one, this unique flooring option is definitely worth considering for its sustainability, versatility, and timeless appeal.

WOODEN WALLS

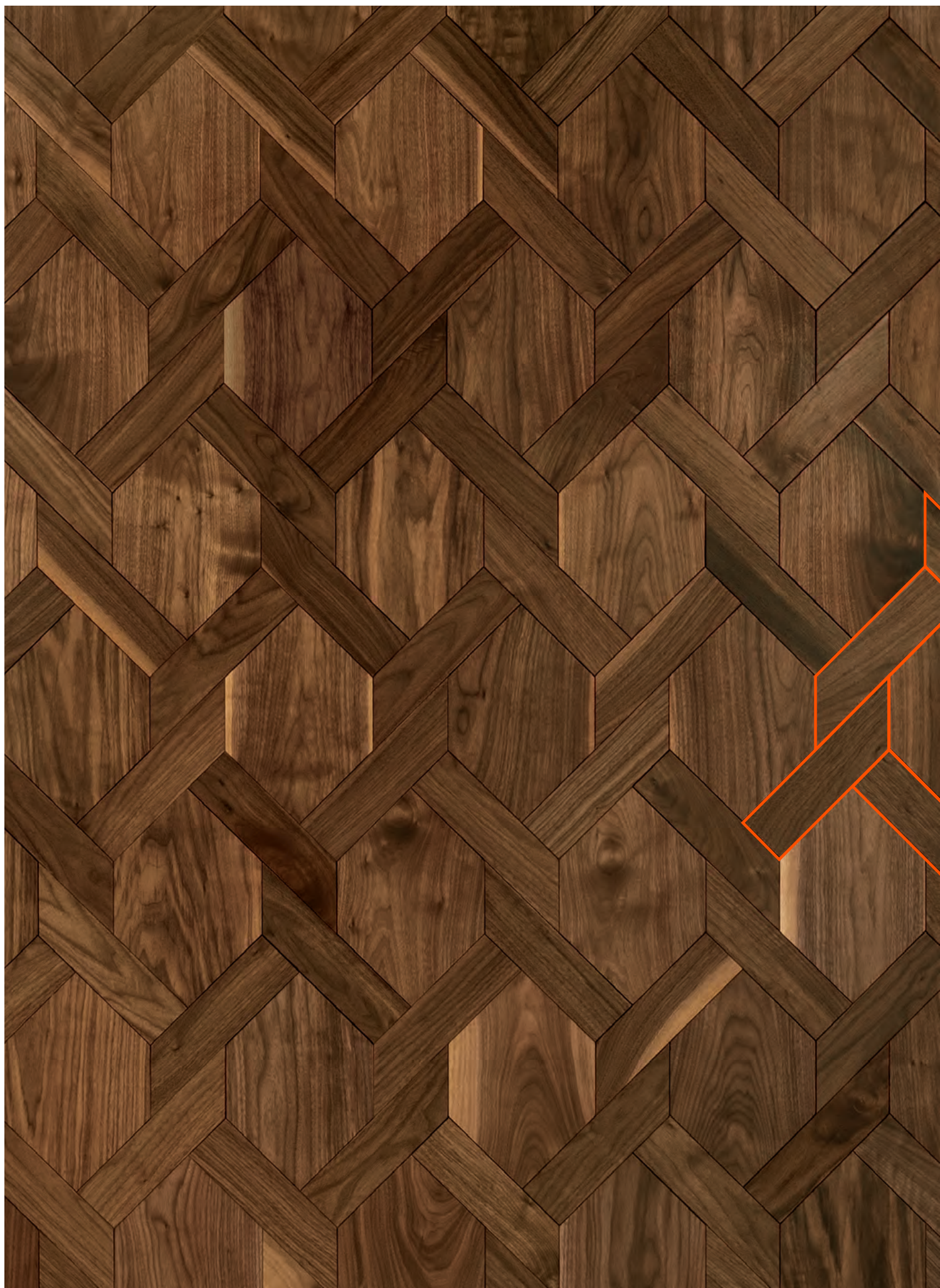
American Walnut Select

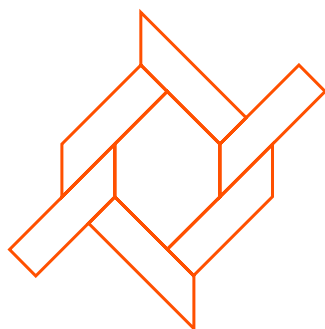


New decorative effects provide walls with fascinating geometrical patterns that are fantastically modern and dynamic.

Textures are created by using wood elements in different colours and shapes, composed in evocative modular patterns. Innovation and tradition meet through these original ideas due to exclusive, stunning design that expresses the very best in craftsmanship, as the compositions are created by hand during install.

Our new decorative walls and flooring is the latest stag

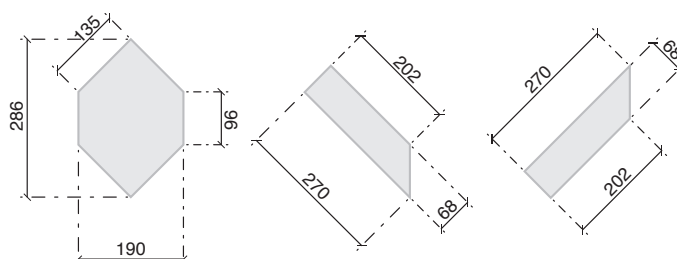




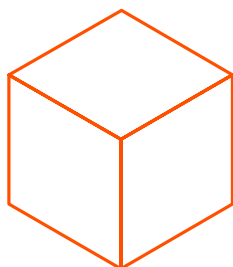
Canestro

A hexagon stars in an intriguing pattern that recalls the weave of traditional, hand-woven raffia baskets.

This type of decoration appeals to those who like geometrical lines and gives the floor or the wall a particular flow by matching different, harmoniously repeated shapes.



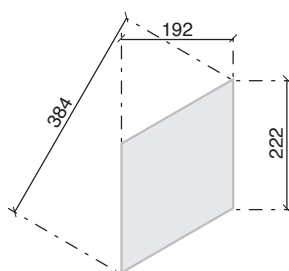
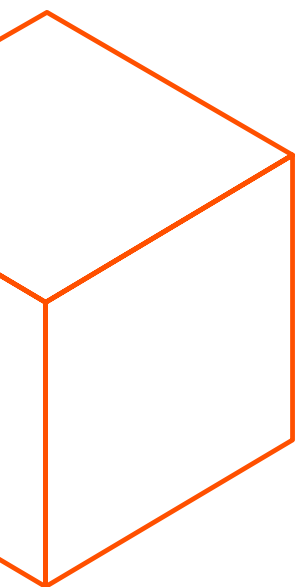




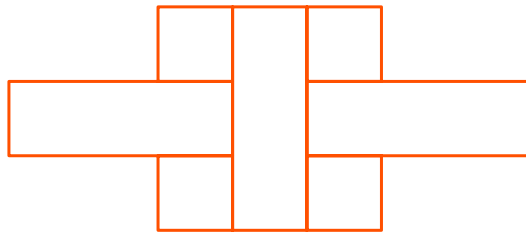
Cubo

An appealing three-dimensional effect makes the floor or the wall seem to come alive, changing perspective as we approach or move away from the surface.

The refined composition surprises us with cubes created by joining three elements and repeating them in a recurring pattern.



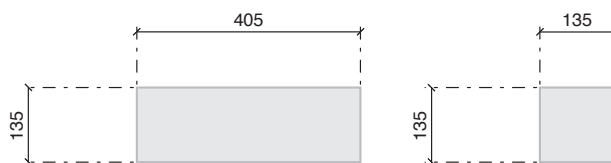




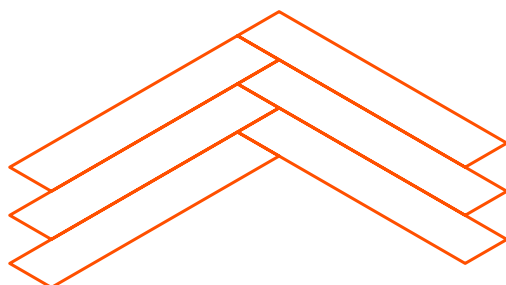
Intreccio

The elegant weave pattern, typical of medieval art, is interpreted in an amazing, modern, unusual way.

The decorative pattern creates the illusion that the wooden elements overlap in an alternating arrangement, by juggling the natural variations in the colour of the wood.



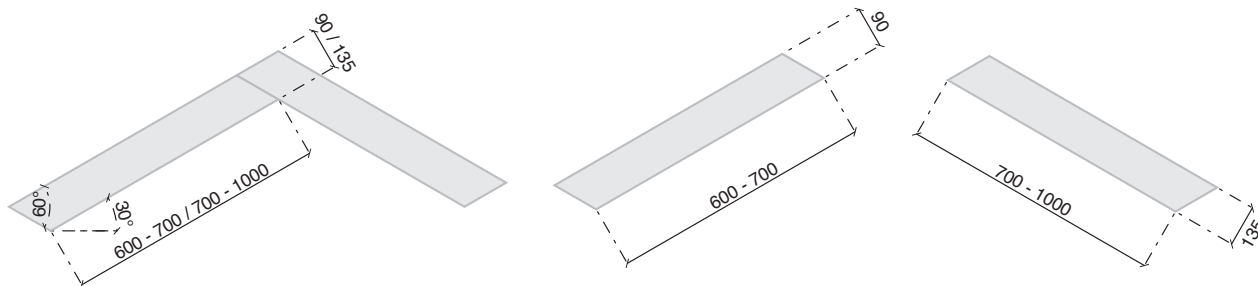




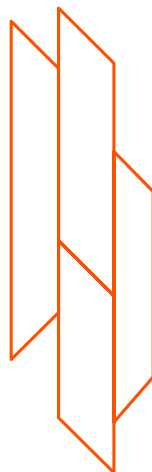
Spina traversa

A new laying method transforms the herringbone pattern to give the floor or the wall a more dynamic, unexpected look.

The inclination of the boards breaks with tradition without forgoing the grace and harmony of the overall result.



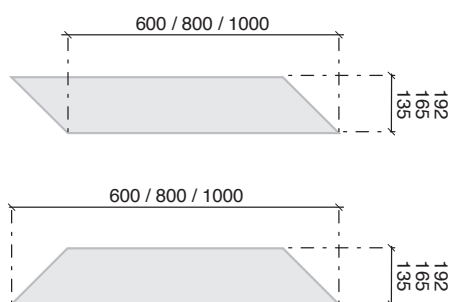




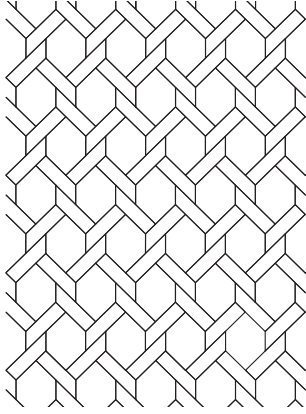
Prisma

Arranged vertically or on the floor, wooden elements create magnificent decorative cladding that ooze charm and style.

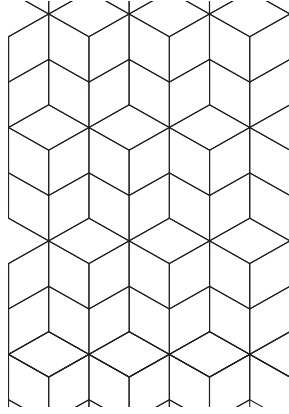
Many laying solutions are provided by mixing different shapes, widths and heights to give a room a strong personality.



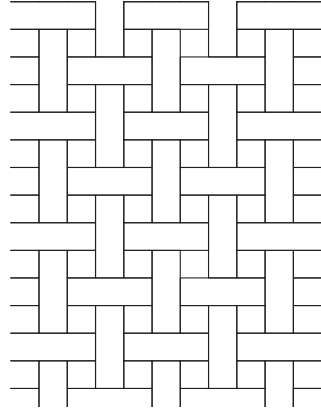
Canestro



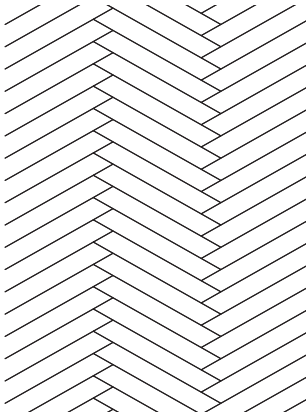
Cubo



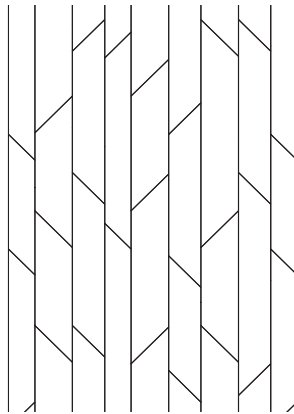
Intreccio



Spina Traversa



Prisma



The Forme collection is in natural wood from certified forests that are responsibly managed to protect nature and human wellbeing.

Wood species can be freely chosen from select or rustic European oak, European or American walnut, rustic European elm or Burma teak.

Patterns are composed of pre-finished, two-layer flooring: a thick solid wood, visible layer in quality wood and solid, natural wood backing. Exclusive processing and top quality raw materials ensure exceptional stability that observes nature's rhythms and absorbs humidity and temperature swings.







European Oak
Thermotreated Medium 2020





*Perfect synthesis of exclusive design
and fine natural materials.*

*Inspired by nature, the collection enhances
essences of high quality, such as the
American walnut and European oak,
processed by master craftsmen in Italy.
The decorative surfaces are made using
high quality 3-Layers planks in random
lengths.*

*The combinations of colours and 4
composition modules offer extraordinary
freedom of customisation.*





REGULAR COLLECTION – MOD. CU10

Great harmony, essential characteristics of the shapes and regularity of the spatial layout define the intriguing linear design of the boiserie. The embossed strips are placed alongside each other in a perfect, uniform repetition in order to bring out the natural variation in wood tones. The Regular Collection is a refined interplay of balance and proportions.

*European Oak
Varnished nero
intenso*

**COLLEZIONE
REGOLARE**

REGULAR
COLLECTION

MOD. CU10

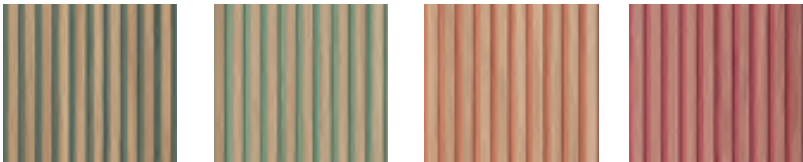
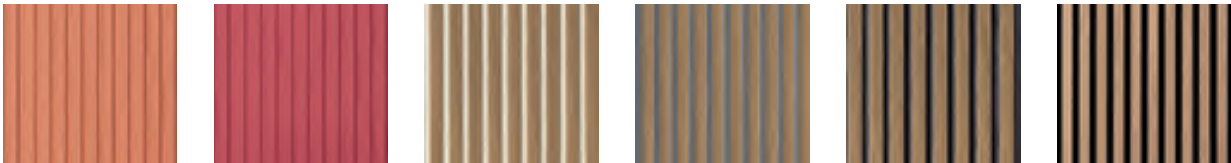
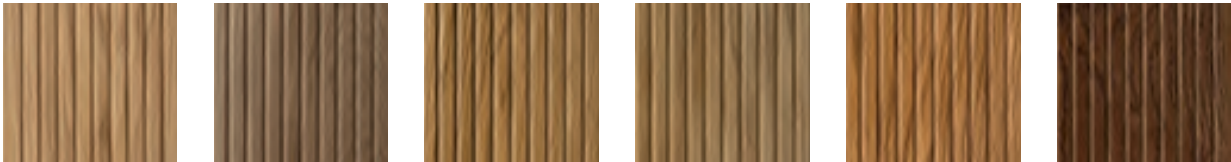
165.00



*American walnut
Brushed Varnished
Natura*



EUROPEAN OAK



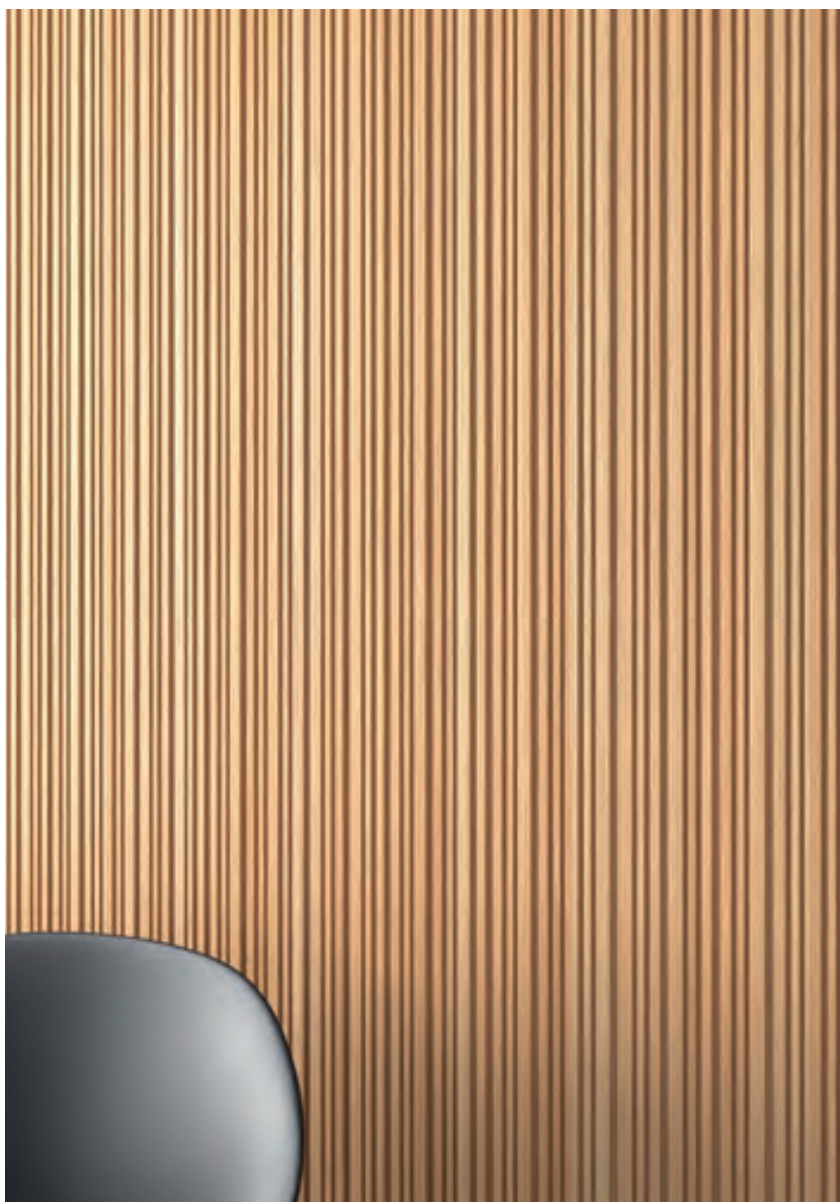
EUROPEAN OAK
THERMOTREATED
MEDIUM 2020



AMERICAN
WALNUT



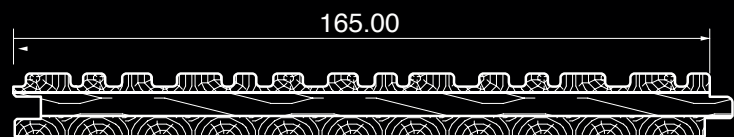




ALTERNATING COLLECTION – MOD. CUA14
Full and empty spaces flow in a
extremely refined dynamic composition.
The primary structure of the wooden
strips is interspersed by a secondary
structure of grooves having different
depths that create an appealing
abstract design. The boiserie revives the
walls with lively elegance.

ALTERNATING
COLLECTION

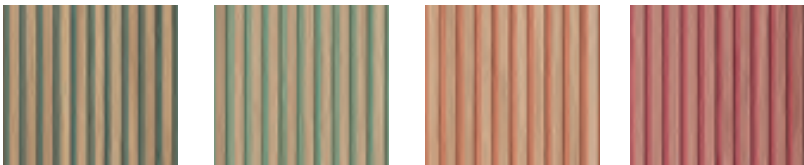
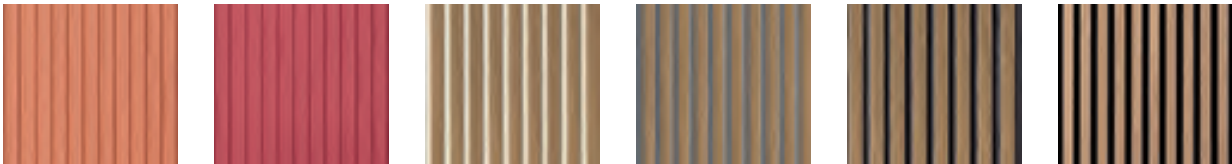
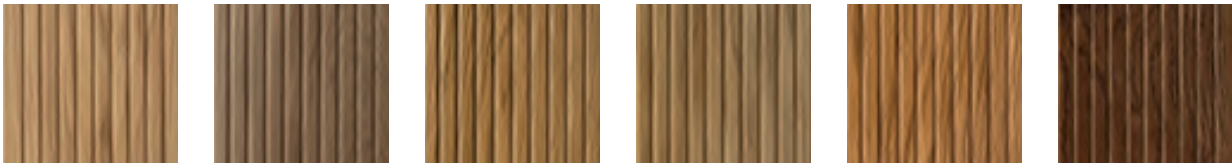
MOD. CUA14



*European Oak
Varnished Natura*



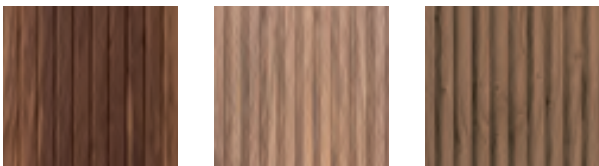
EUROPEAN OAK



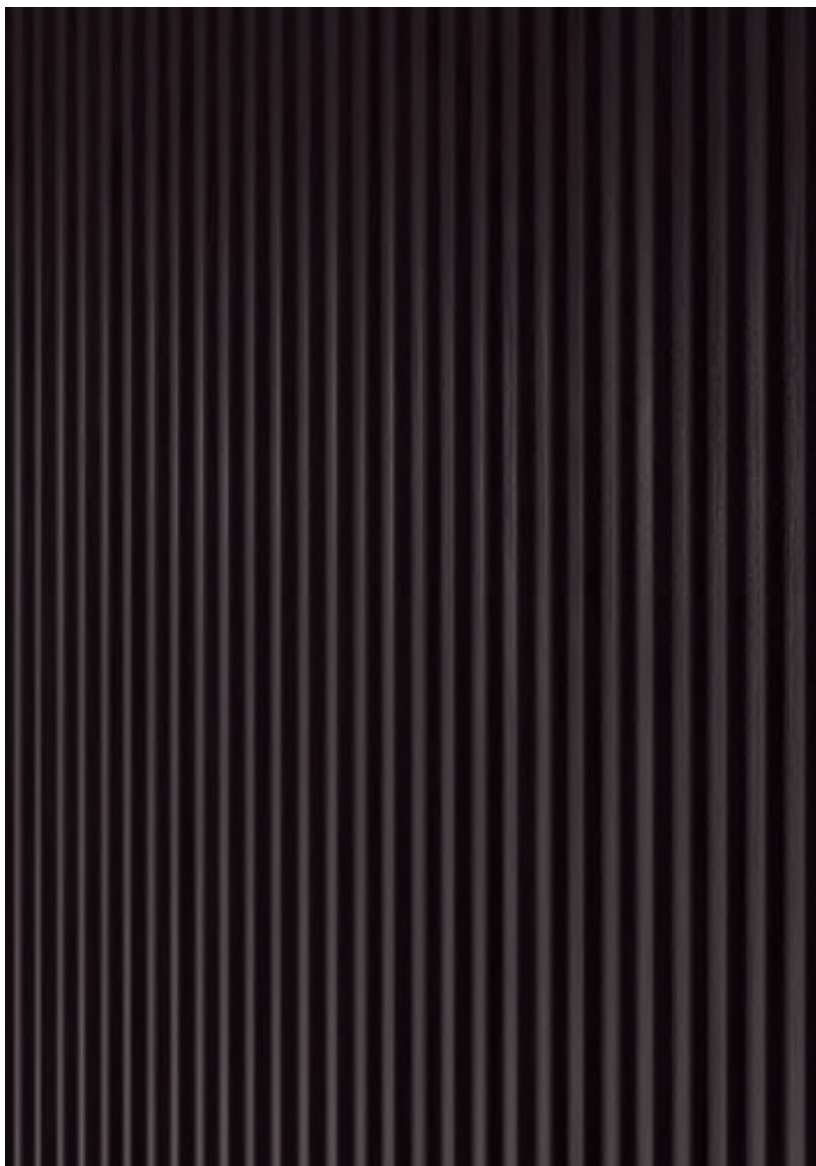
EUROPEAN OAK
THERMOTREATED
MEDIUM 2020



AMERICAN
WALNUT







WAVE COLLECTION – MOD. CW17

The sinuous progression of the boiserie is developed through the alternation of concave and convex surfaces, soft embossing and gentle recesses. The rounded strips and recesses chase each other in an infinite and vibrating regular movement, like the waves of the sea. Wave Collection is an harmony of curved shapes that seem to float in space.

*European Oak
Varnished marrone
grigiastro*

COLLEZIONE ONDULATO

WAVE
COLLECTION

MOD. CWI7

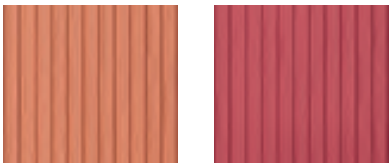
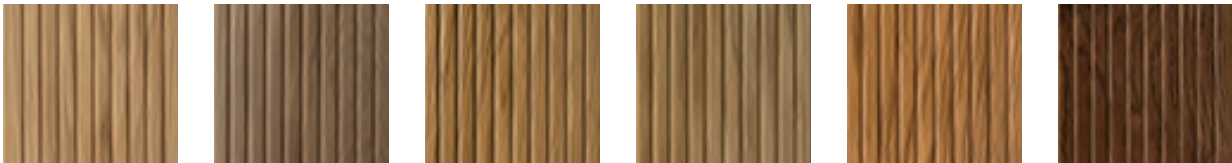
165.00



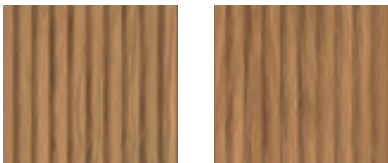
*European Oak
Varnished marrone
grigiastro*



EUROPEAN OAK



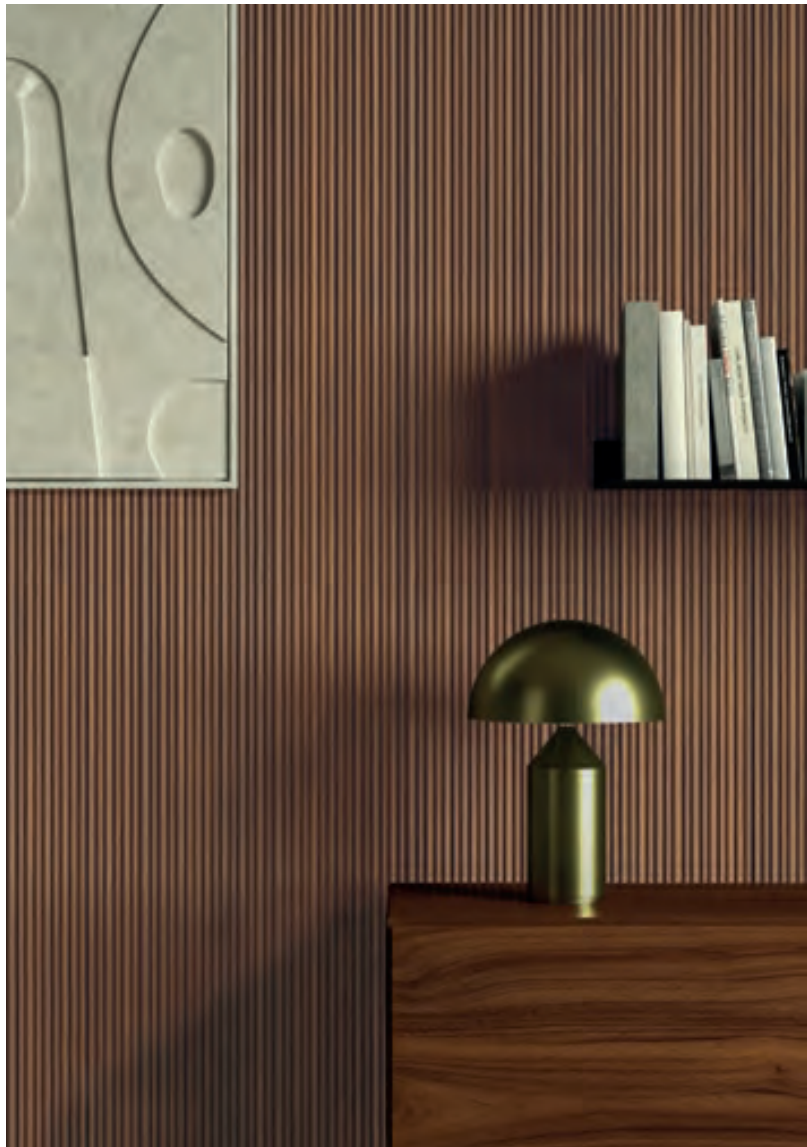
EUROPEAN OAK
THERMOTREATED
MEDIUM 2020



AMERICAN
WALNUT







*ALTERNATING WAVE COLLECTION - MOD. CWA15
The eclectic design amazingly combines the slatted boiserie with smooth natural wood panels with magnificent visible grains. The geometrical cuts cross the walls with a succession of lines and intersections, flat and sculpted surfaces, creating a decoration having great visible impact. Alternating Wave Collection is a sophisticated expression of contemporary style.*

COLLEZIONE ONDULATO ALTERNATO

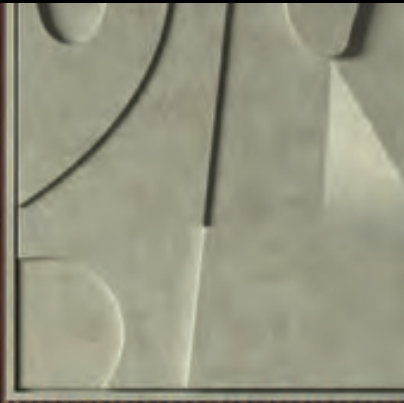
ALTERNATING WAVE
COLLECTION

MOD. CWA15

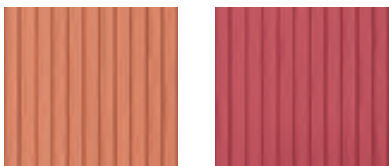
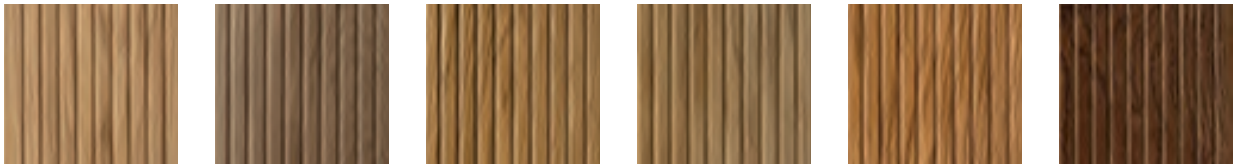
165.00



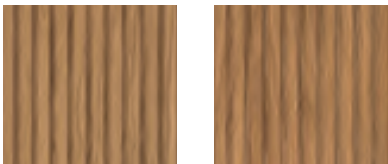
*American Walnut
Varnished Milano*



EUROPEAN OAK



EUROPEAN OAK
THERMOTREATED
MEDIUM 2020



AMERICAN
WALNUT





*American walnut
Brushed Varnished
Natura*



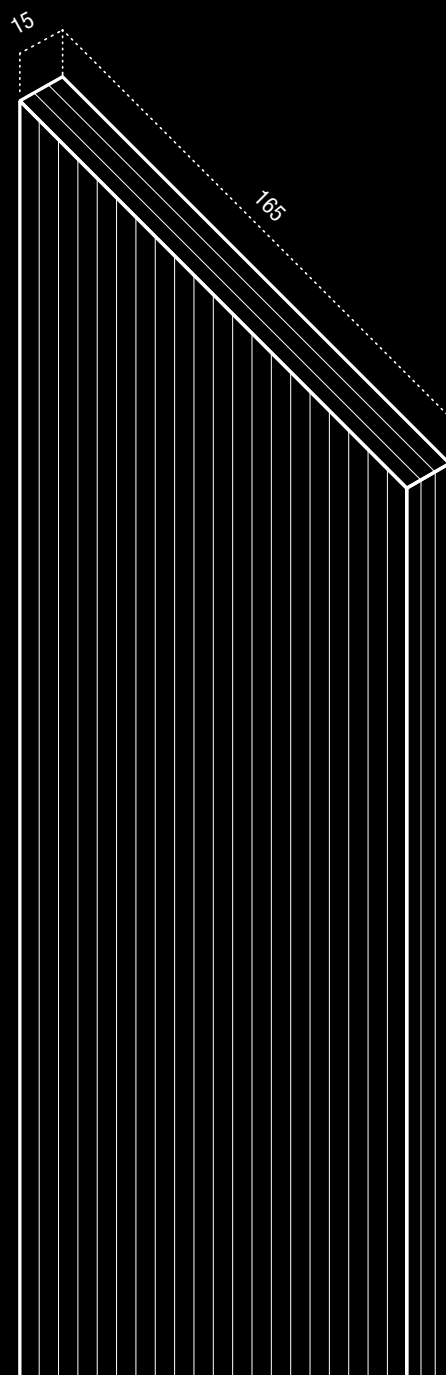
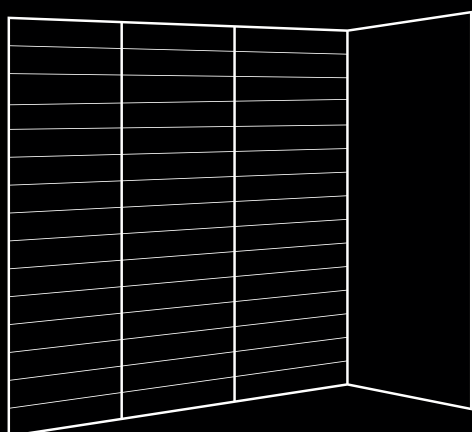
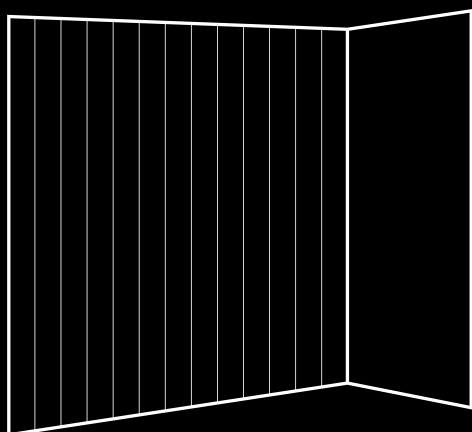
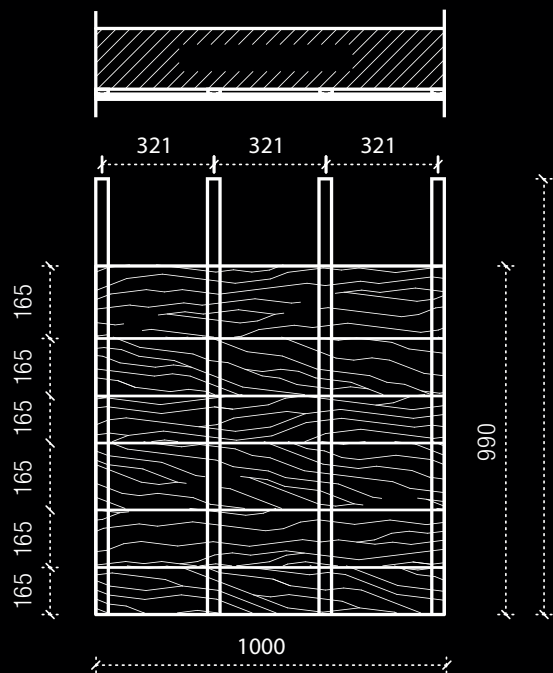
*FURNISHING ACCESSORIES, DOORS AND BOISERIE
SYSTEM Not only decorative surfaces for
doors and furnishing accessories, represent a
new concept boiserie system thanks to an
innovative hideaway mounting solution easy
to install, easily removable and adaptable to
different architectural needs.*

*American Walnut
Varnished*



INSTALLATION WITH CLIPS
Installation with clips facilitates laying, achieving a flawless finish and vertical and horizontal sealing. The strips can be removed and put back at any time to be replaced or to access sockets or hidden compartments.

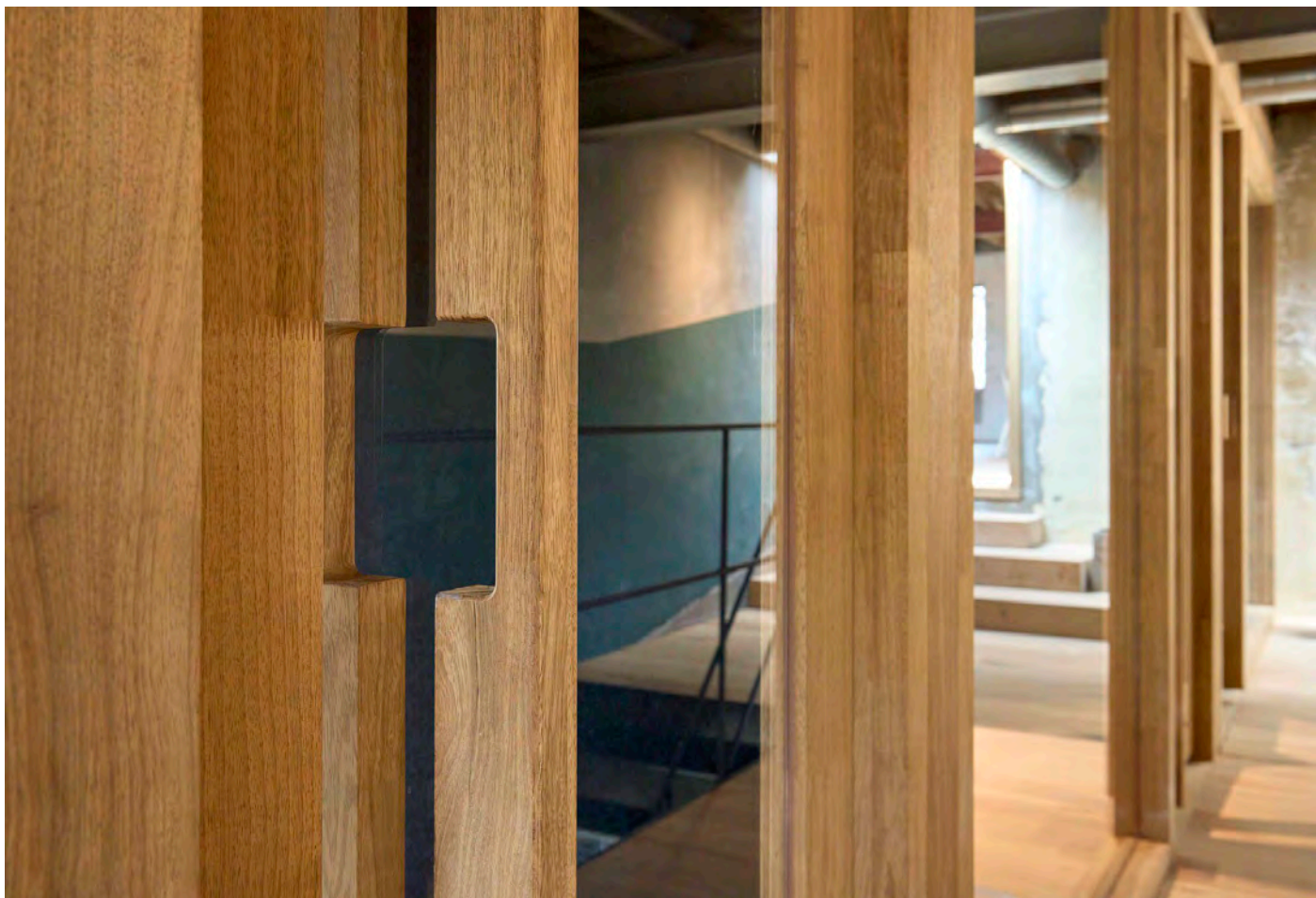




EXTERIOR WOOD SOLUTIONS

Private Residence, **Hollandsche Rading**
Thermo Golden Teak Untreated





Private Residence, Amersfoort

Thermo Golden Teak Untreated Custom Processed





Private Residence, **Den Haag**
Thermo Golden Teak Rift Custom Aged





Alfriston School, **Buckinghamshire**
Thermo Golden Teak Untreated





Starbucks Coffee EMEA BV, Amsterdam
Thermo Golden Teak Oiled



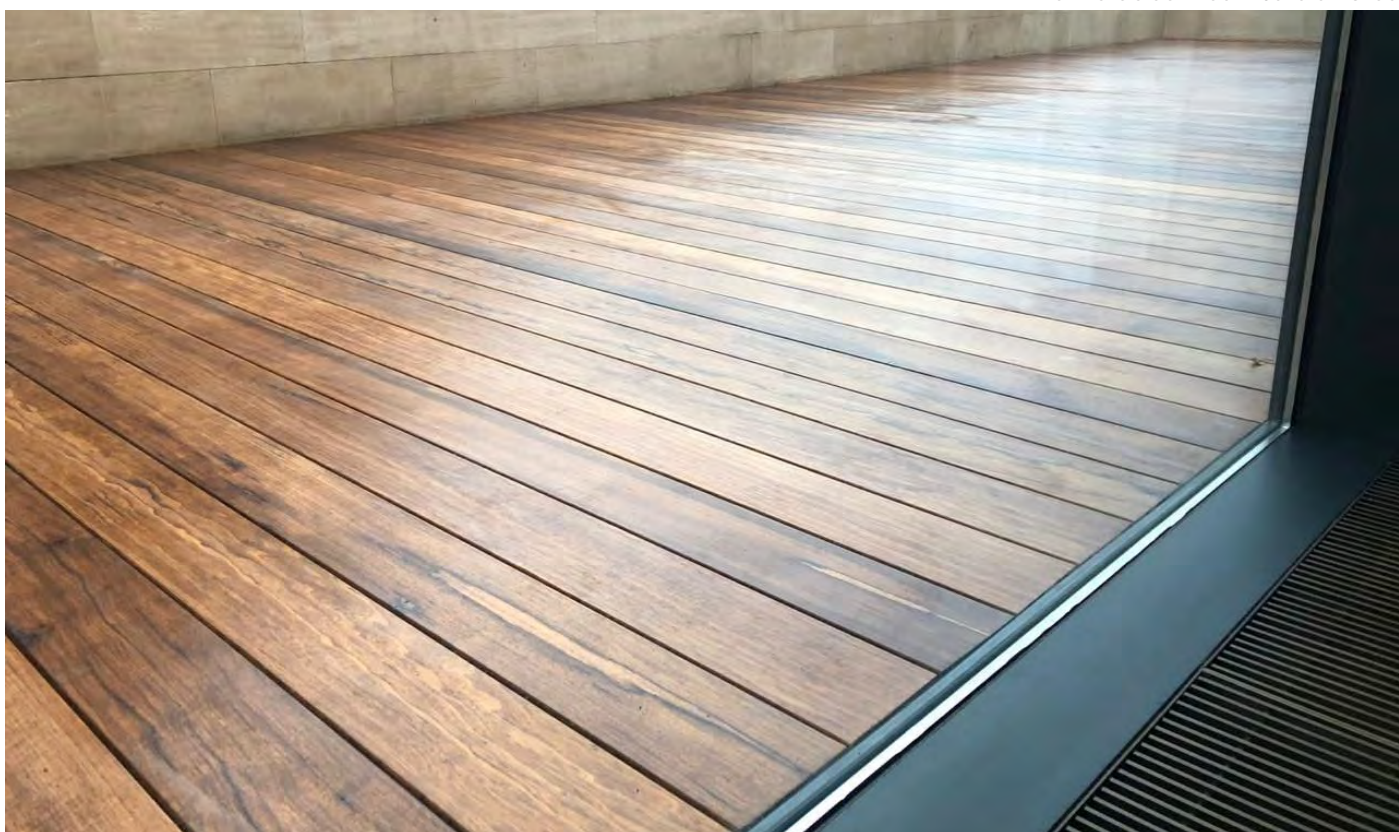


Office Building De Hoop, Zelhem
Thermo Golden Teak Untreated





Private Residence, **Moscow**
Thermo Golden Teak Rustic UV Oiled





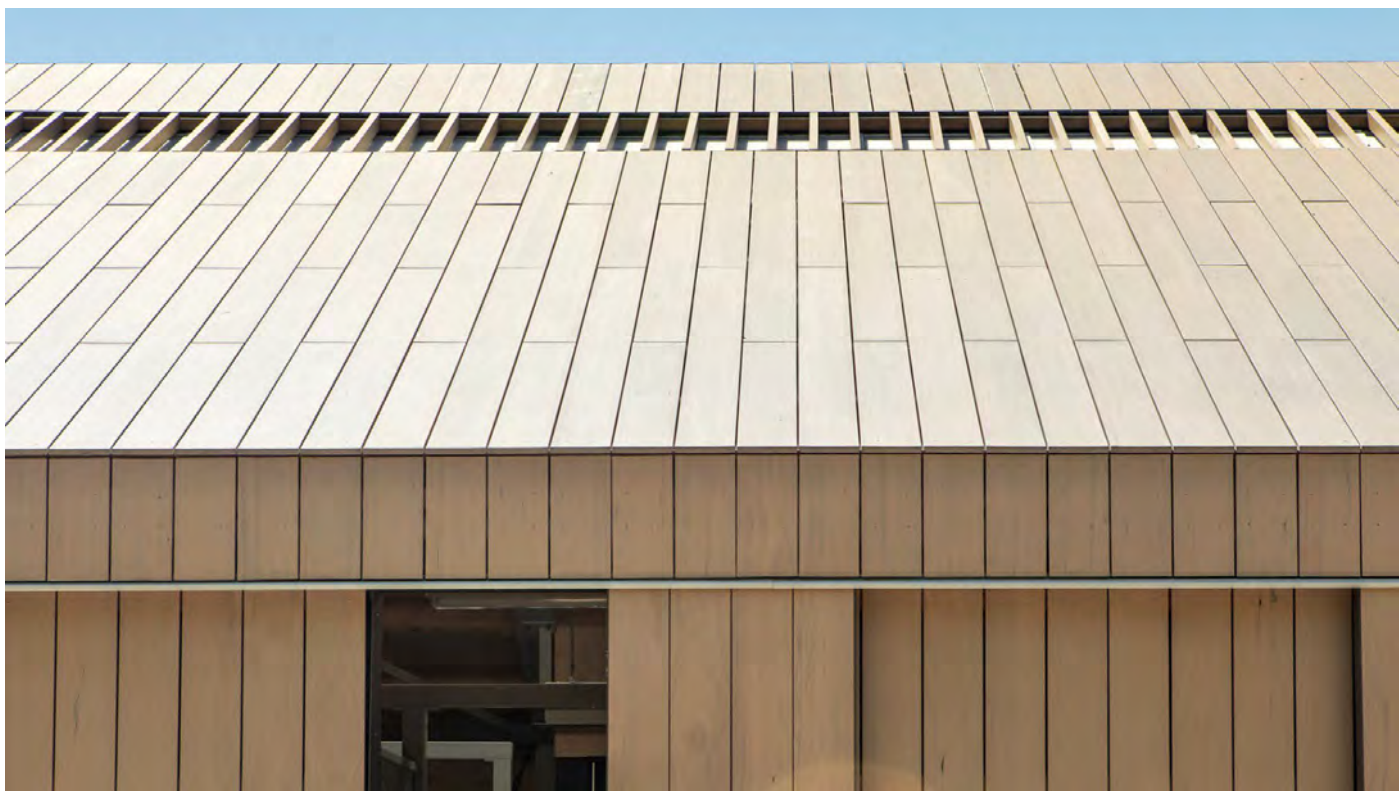
Private Residence, **Moscow**

Thermo Golden Teak Select UV Oiled



Holiday Resorts Duyn Zoom, **De Koog**
Thermo Golden Teak Custom Aged





Manege Meijndel, Wassenaar
Thermo Golden Teak Whitewashed





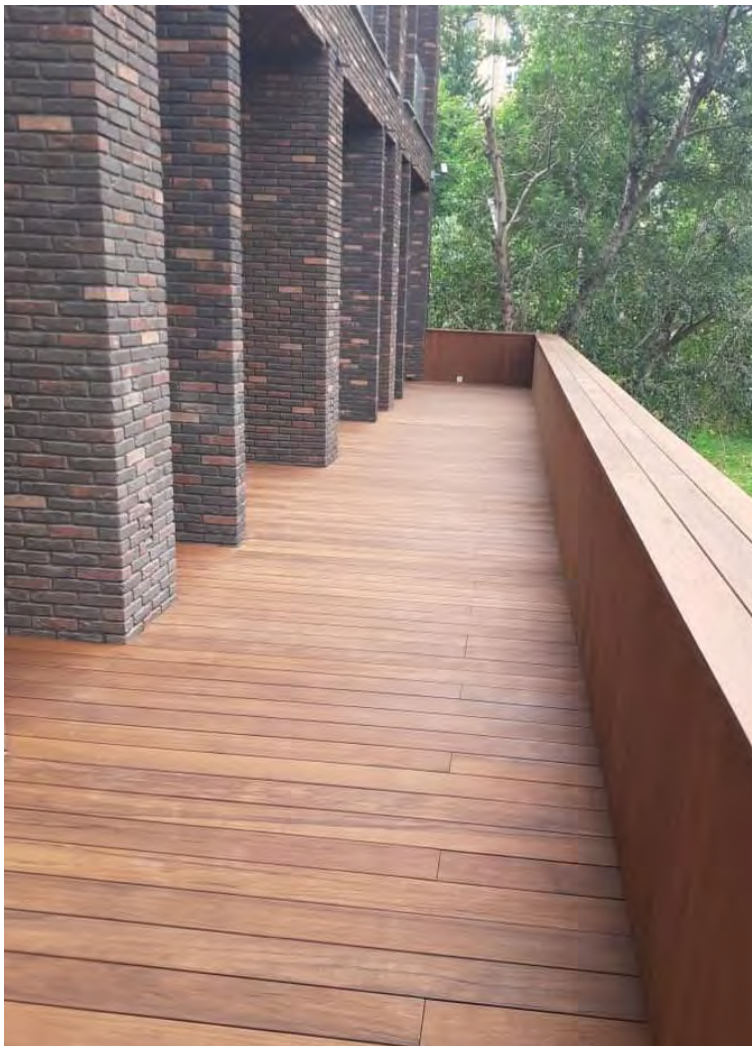
Private Residence, Krasnodar
Thermo Golden Teak UV Oiled



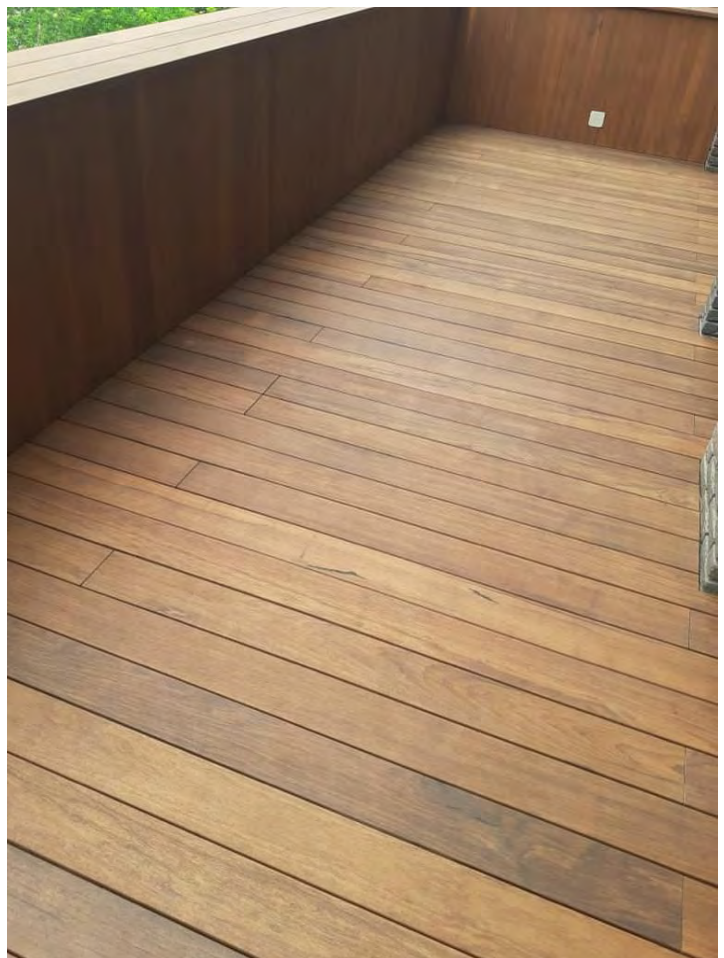


Woonboerderij, Oirschot
Thermo Golden Teak Custom Aged





Private Residence, **Moscow**
Thermo Golden Teak UV Oiled





Clemenspoort, Gent
Thermo Golden Teak Untreated



PLATONISING

Our 'platonising' (hydrothermal modification) process improves the qualities of wood. We do this in a completely environmentally-friendly way without chemical additives. After the process, the wood is extremely dimensionally stable and easily processable, making it suitable for the most innovative designs.

We are the only company in the world that modifies wood in this sustainable way. The patented process takes place locally in our own factory in the Netherlands. In this way, we can guarantee the continuous quality of our wood products.



Steaming (hydrothermolysis)

The process

In simplistic terms, our process consists of three steps: steaming, drying and curing. The additional process step in relation to thermal modification renders the wood less brittle and gives it the quality.



Molecular structure of untreated wood

Raw material

Fast-growing types of wood from sustainably managed, certified forests.



Step 1

Steaming (hydrothermolysis)

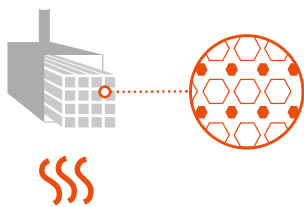
The wood is treated under pressure by hot steam in an autoclave. Naturally-present sugars – a culture medium for molds – are broken down.



Step 2

Drying

After the hydrothermal treatment, the wood contains a lot of moisture. So, the wood is carefully and gradually dried in one of our drying kilns.



Step 3

Curing

The wood is heated in the oven to 180 °C in a dry environment. New stable bonds come about in the wood. The relatively low temperature ensures that the wood remains strong and resilient after completion of the modification process.



Result

Excellent, dimensionally stable and aesthetic wood for every design.

PROFILES



Platonium 01 Channel siding

Dimensions (mm)	Effective dimension*	T. Teak	Poplar	Spruce
18 x 90	75 + 4	✓	✓	✓
18 x 115	101 + 4	✓	✓	✓
18 x 140	125 + 4	✓	✓	✓
18 x 185	170 + 4	✓	✗	✓



Platonium 04 Rebated

Dimensions (mm)	Effective dimension*
9/20 x 140	125 + 4
9/20 x 185	170 + 5
13/26 x 185	170 + 5



Platonium 02 Channel siding with false rebate

Dimensions (mm)	Effective dimension*	T. Teak	Poplar	Spruce
18 x 115	101 + 4	✓	✓	✓
18 x 140	125 + 4	✓	✓	✓
18 x 185	170 + 4	✓	✗	✓



Platonium 05 Planed

Dimensions (mm)	T. Teak
18 x 52	✓
18 x 66	✓
18 x 90	✓
18 x 115	✓
18 x 140	✓
18 x 185	✓
27 x 140	✓
40 x 140	✓



Platonium 03 Rebated shiplap board

Dimensions (mm)	Effective dimension*	T. Teak	Poplar	Spruce
18 x 140	125 + 4	✓	✓	✓



Platonium 07 Rhombus

Dimensions (mm)	T. Teak
18 x 66	✓
18 x 90	✓
18 x 115	✓
18 x 140	✓



Feather edge board

T. Teak	Poplar	Spruce
✓	✗	✓
✓	✗	✓
✓	✗	✓



Platonium 10 Castellated profile

Dimensions (mm)	Effective dimension*	T. Teak	Poplar	Spruce
27 x 140	129 + 4	✓	✗	✓



Decking board

Poplar	Spruce
✓	✓
✓	✓
✓	✓
✓	✓
✓	✓
✓	✓
✗	✓
✗	✓
✗	✓



Platonium 16 Decking boards

Dimensions (mm)	T. Teak
27 x 140	✓



Decking board

Poplar	Spruce
✓	✓
✓	✓
✓	✓
✓	✓

PROFILES



Platonium 01 Channel siding

Dimensions (mm)	Effective dimension*	T. Teak	Poplar	Spruce
18 x 90	75 + 4	✓	✓	✓
18 x 115	101 + 4	✓	✓	✓
18 x 140	125 + 4	✓	✓	✓
18 x 185	170 + 4	✓	✗	✓



Platonium 02 Channel siding with false rebate

Dimensions (mm)	Effective dimension*	T. Teak	Poplar	Spruce
18 x 115	101 + 4	✓	✓	✓
18 x 140	125 + 4	✓	✓	✓
18 x 185	170 + 4	✓	✗	✓



Platonium 03 Rebated shiplap board

Dimensions (mm)	Effective dimension*	T. Teak	Poplar	Spruce
18 x 140	125 + 4	✓	✓	✓



Dimensionally stable



Easily processable



Can be applied untreated



50-year lifespan



Fully recyclable



Without chemicals



Environmentally friendly



Up to 15-year guarantee

STAIRS







Elevate the aesthetic and functionality of your space with our bespoke ladders and stairs. Whether you're seeking a chic ladder to access your lofted bedroom or an elegantly crafted staircase to connect floors, our custom-fit solutions are designed to seamlessly blend with your interior design visions.

Every space is unique. And so is every dream. That's why we don't believe in one-size-fits-all. Our expert craftsmen take into account the dimensions, style, and specific needs of your space, crafting pieces that are as functional as they are beautiful. From modern minimalism to timeless traditional designs, we have a solution for every taste.

Imagine a space where every element, down to the very steps you climb, is a reflection of your personal style and needs. With our custom fit ladders and stairs, you don't have to imagine. It's your space, tailor-made.

